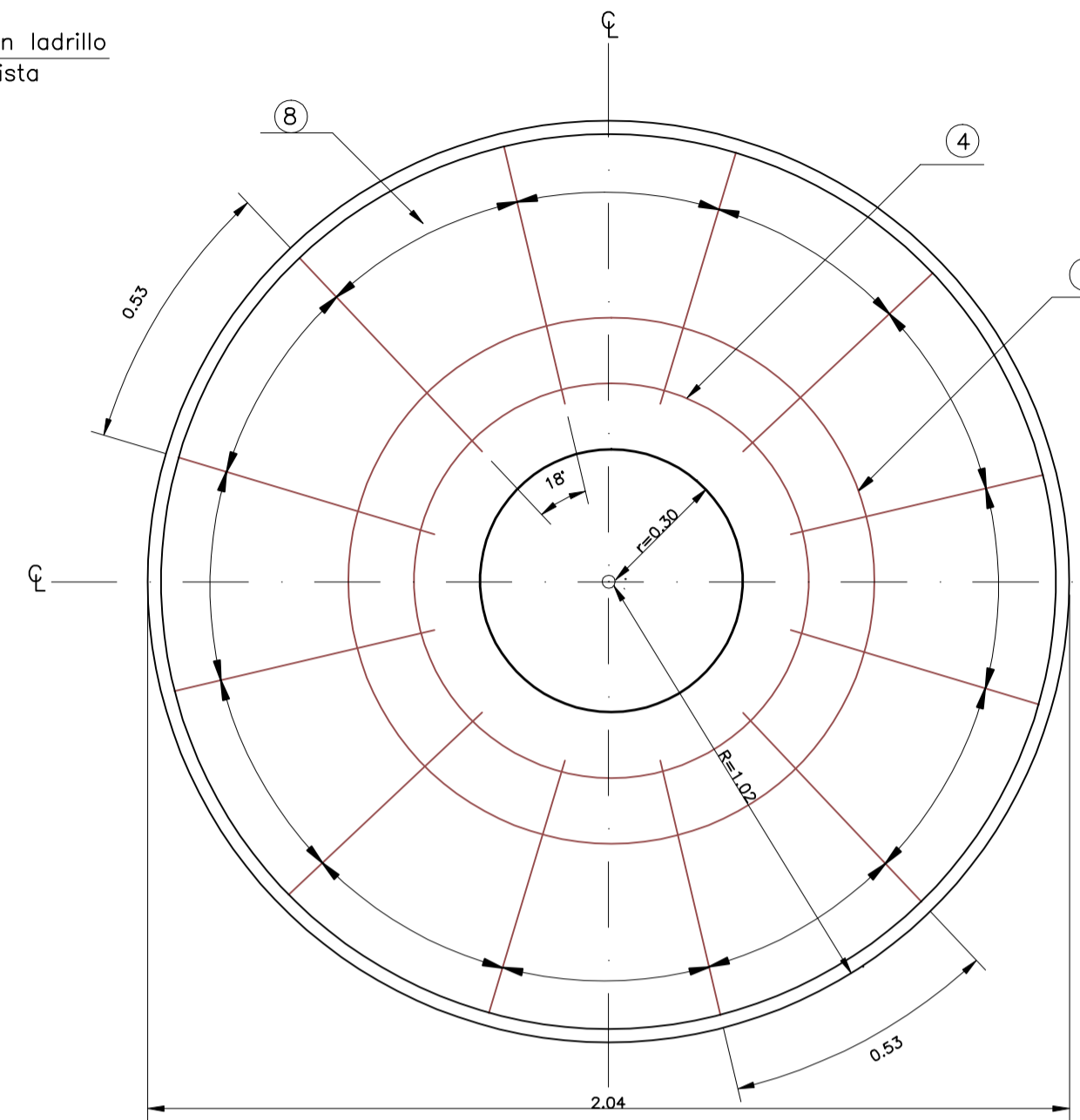
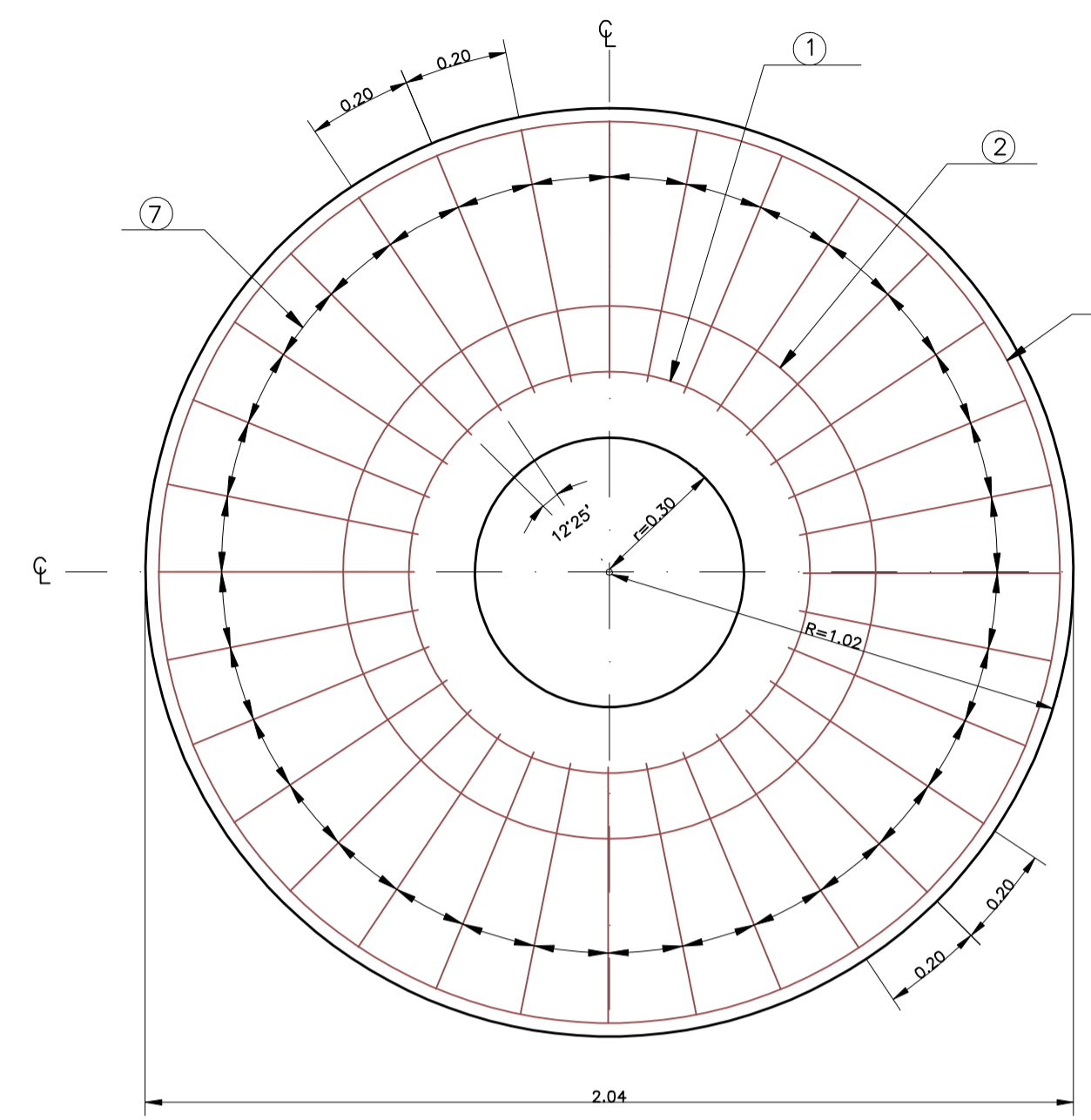


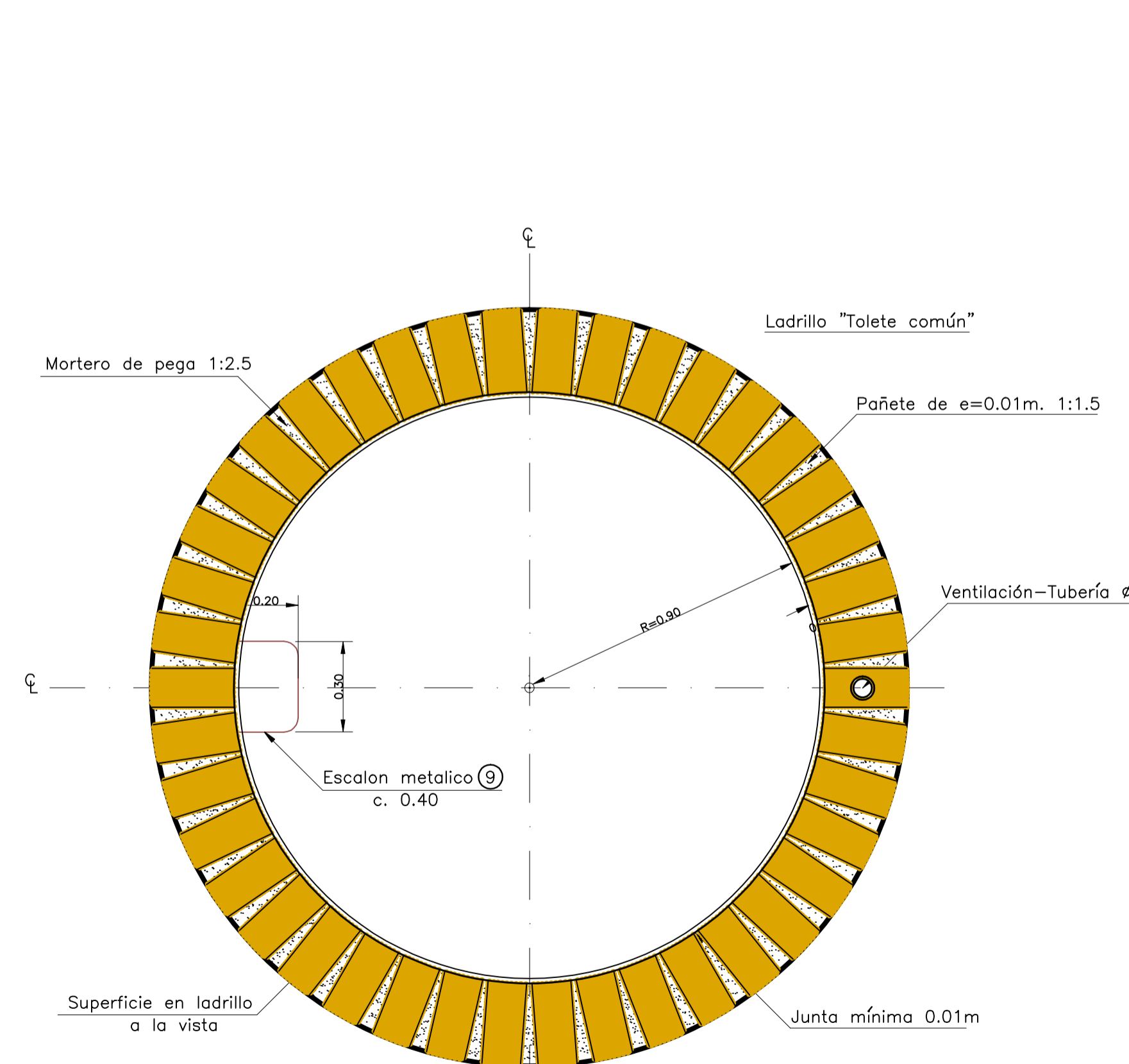
ELEVACION Ø = 1.80



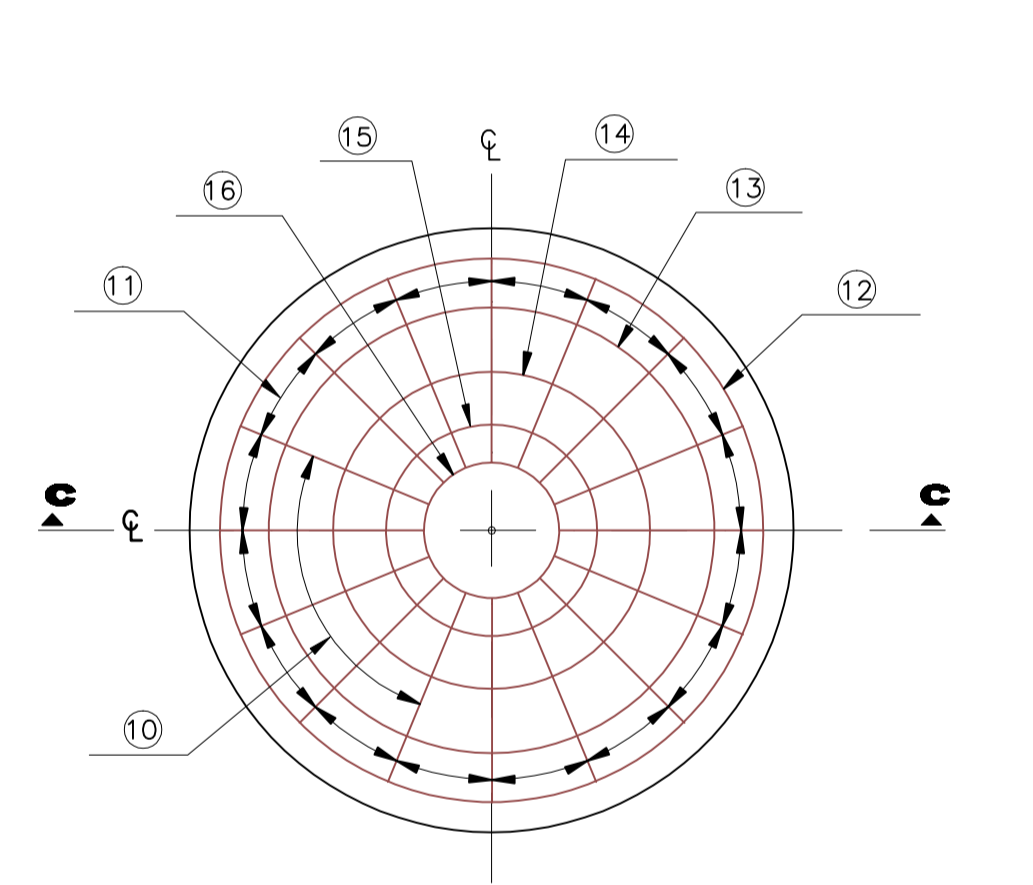
PLACA INFERIOR



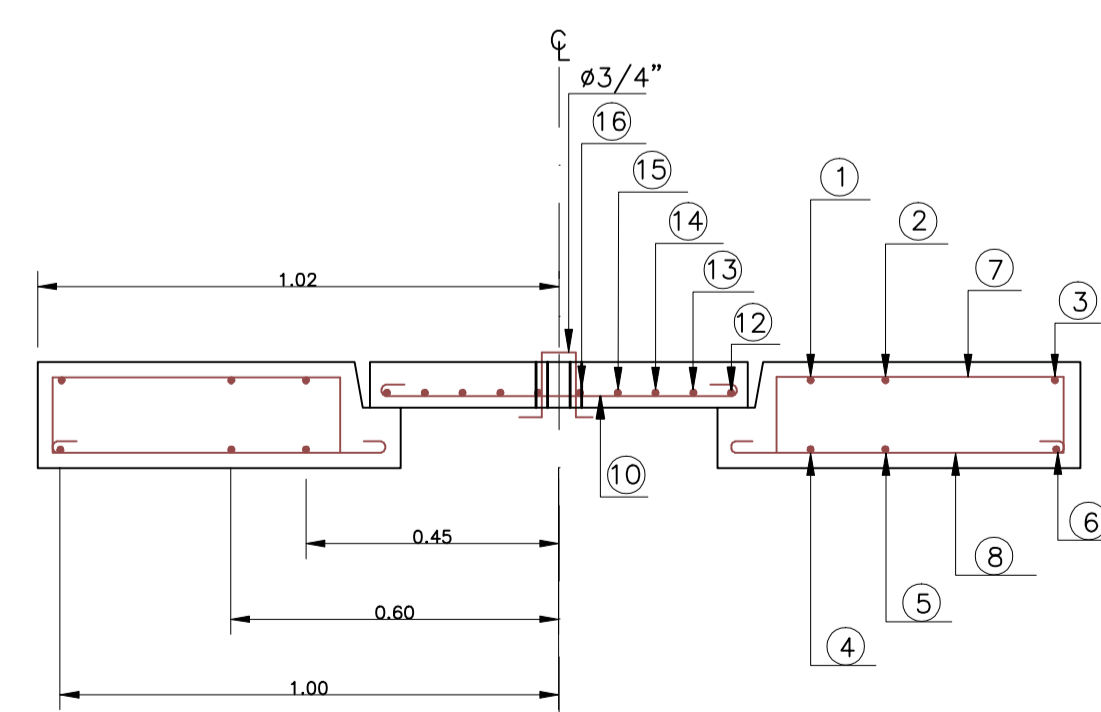
PLACA SUPERIOR



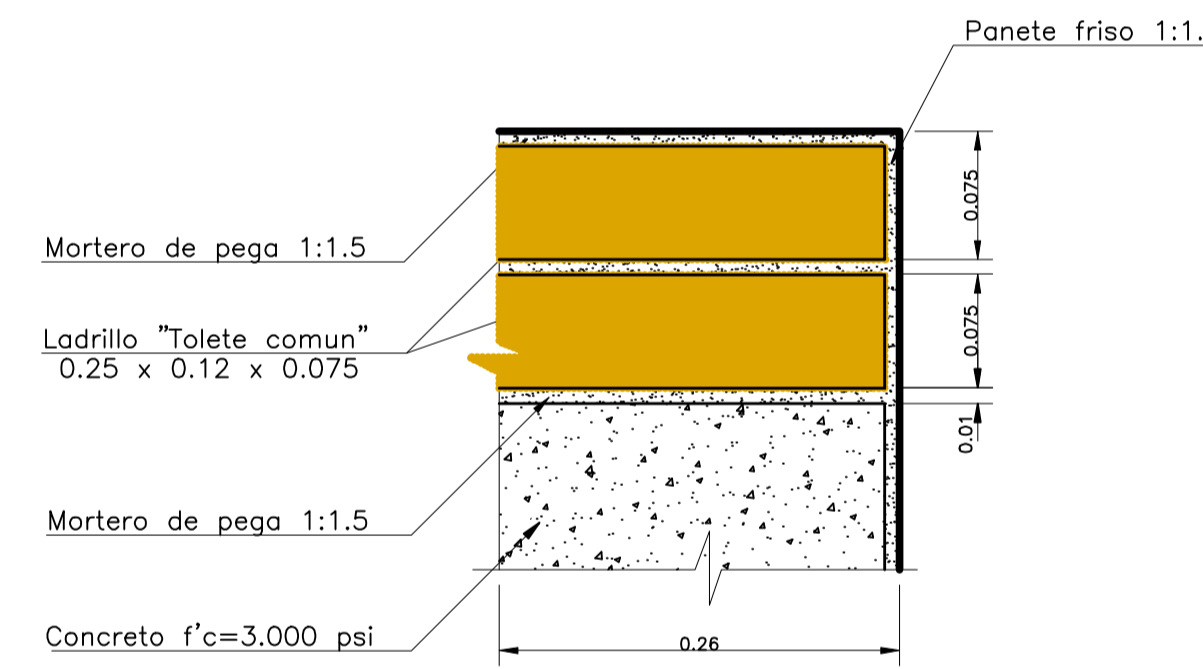
CORTE B - B



TAPA CORTE C - C



PLACA TAPA CORTE D - D



DETALLE 1

- NOTAS:**
- Todas las dimensiones no especificadas están dadas en metros.
 - Este plano muestra el diseño típico para pozos de inspección en ladrillo y su respectiva tapa en concreto reforzado.
 - La placa superior y la tapa se fundirán en concreto f'c=3000 psi.
 - Acero estructural tipo A-37 o similar.
 - Ladrillos según especificaciones ASTM - C62.
 - El costo de pañetes y de mortero debe incluirse en el precio de muros de ladrillo.
 - La tubería sanitaria de PVC deberá cumplir con la norma ICONTEC-382.
 - La cantidad del acero para los escalones no se incluye en el cuadro de despiece y cantidades de obra, ya que ésta varía en función H.

CANTIDADES APROXIMADAS DE OBRA

1- ESTRUCTURA DE LADRILLO Ø = 1.80 POR M DE PROFUNDIDAD	540 Und.
Ladrillo (0.25x0.12x0.075)	0.60 M ³
Mortero de pega 1 : 2.5	0.06 M ³
Pañete para friso 1:1.5	0.06 M ³
2- CONO DE REDUCCION H=0.40	210 Und.
Ladrillo (0.25x0.12x0.075)	0.30 M ³
Mortero de pega 1 : 2.5	0.30 M ³
3- PLACA	0.60 M ³
Concreto f'c=3.000 psi.	40.41 M ³
Acero de refuerzo A-37 o similar	40.41 Kg.
4- TAPA	0.02 M ³
Concreto f'c=3.000 psi.	0.02 M ³
5- ESCALONES	336 Kg.
Acero A-37 o similar por escalon	336 Kg.

DESPIECE Y CANTIDADES DE OBRA PARA PLACA Y TAPA

CANT.	#	MARCA	TIPO	A	B	C	D	E	LONG. UNIT. (m)	LONG. TOTAL (m)	PESO TOTAL (kg)	FORMA	
1	2	2320	1	0.35	2.85				3.20	3.20	0.80		
1	2	2420	2	0.40	3.80				4.20	4.20	1.05		
1	2	2670	3	0.40	6.30				6.70	6.70	1.68		
1	4	4340	4	0.55	2.85				3.40	3.40	3.40		
1	4	4440	5	0.60	3.80				4.40	4.40	4.40		
1	4	4690	6	0.60	6.30				6.90	6.90	6.90		
32	3	3090	7	0.175	0.55	0.175			0.90	28.80	6.13		
12	3	3090	8	0.15	0.60	0.15			0.90	10.90	6.05		
TOTALES PARA UNA PLACA									ACERO REFUERZO	40.41	Concreto 3.000 psi.		0.60 M ³
VARIA con H	6	6150	9	0.45	0.30	0.45	0.15	0.15	1.50				
2	3	3095	10	0.15	0.65	0.15			0.95	1.90	1.10		
12	3	3058	11	0.15	0.28	0.15			0.58	7.00	3.90		
1	3	3245	12	0.30	2.15				2.45	2.45	1.40		
1	3	3200	13	0.30	1.70				2.00	2.00	1.10		
1	3	3155	14	0.30	1.25				1.55	1.55	0.90		
1	3	3105	15	0.30	0.75				1.05	1.05	0.60		
1	3	3080	16	0.30	0.50				0.80	0.80	0.50		
TOTALES PARA UNA PLACA									ACERO REFUERZO	40.41	Concreto 3.000 psi.	0.60 M ³	

CUADRO DE DIMENSIONES Y CANTIDADES DE OBRA

ESTRUCT. POZO	T I P O	COTA RASANTE	COTA B	COTA A	H	LUBRIFI. MARCO EN LADRILLO (m ²)	CONCRETO PLACA Y ARO (m ³)	PESO ARMADURA (kg)
PI-MENS-R65	V	894.10	893.50	893.45	0.34	2.84	0.61	93.09
PI-MENS-R66	V	896.56	896.06	896.01	0.41	3.21	0.61	96.44
PI-MENS-R67	V	896.30	893.70	892.79	0.52	3.52	0.61	103.16
PI-MENS-R68	V	899.84	899.24	899.19	0.65	3.85	0.61	103.16
PI-MENS-R69	V	896.42	895.82	894.82	1.00	5.06	0.61	103.16
PI-MENS-R70	V	880.88	880.28	880.15	0.21	4.11	0.61	96.44
PI-MENS-R71	V	891.27	890.67	890.54	1.11	5.19	0.61	99.80
PI-MENS-R72	V	880.03	879.43	879.14	0.29	4.45	0.61	96.44
PI-MENS-R73	P	892.20	891.60	891.54	2.86	21.73	0.64	133.26
PI-MENS-R74	P	883.84	883.24	883.14	1.60	11.65	0.64	153.34
PI-MENS-R75	P	878.68	878.08	878.08	1.60	11.65	0.64	153.34
PI-MENS-R76	P	872.04	871.44	871.39	1.69	13.52	0.64	153.34
PI-MENS-R77	P	871.97	871.37	870.60	0.77	7.58	0.64	102.94
PI-MENS-R78	P	871.26	870.66	870.13	0.32	4.68	0.64	102.94
PI-MENS-R79A	P	866.35	865.75	864.03	0.30	2.59	0.64	96.22
PI-MENS-R79B	P	866.35	865.75	864.03	0.30	2.59	0.64	96.22
PI-MENS-R80	P	864.05	863.45	863.55	0.50	2.59	0.64	96.22
PI-MENS-R81	P	864.73	864.13	863.20	1.10	9.73	0.64	102.94
PI-MENS-R82	P	863.59	862.99	862.40	0.59	4.40	0.64	96.22
PI-MENS-R83	P	861.86	861.26	861.02	0.24	4.16	0.64	102.94
PI-MENS-R84	P	860.60	860.00	859.77	0.28	4.43	0.64	102.94
PI-MENS-R85	P	858.09	857.49	857.06	0.43	5.36	0.64	102.94
PI-MENS-R86	P	856.45	855.85	854.99	0.36	4.76	0.64	102.94
PI-MENS-R87	P	856.52	855.92	855.59	0.25	4.76	0.64	102.94
PI-MENS-R88	P	852.10	851.50	851.21	0.29	4.50	0.64	102.94
PI-MENS-R89	P	857.40	856.80	856.27	0.53	6.90	0.64	102.94
PI-MENS-R90	P	853.88	853.28	849.55	3.73	26.72	0.64	159.87
PI-MENS-R91	P	856.15	855.55	854.12	1.60	11.65	0.64	153.34
PI-MENS-R92	P	856.43	855.83	854.53	1.40	11.65	0.64	153.34
PI-MENS-R93	P	849.07	848.47	848.19	0.29	4.45	0.64	102.94
PI-MENS-R94	P	848.52	847.92	847.28	1.66	13.34	0.64	153.34
PI-MENS-R95	P	846.89	846.29	846.06	0.30	2.59	0.64	96.22
PI-MENS-R96	P	846.86	846.26	846.56	1.72	13.70	0.64	153.34
PI-MENS-R97	V	846.86	846.26	845.74	0.52	5.34	0.61	99.80
PI-MENS-R98	V	844.99	844.39	844.06	0.33	4.72	0.61	96.44
PI-MENS-R99	V	843.19	842.59	842.32	0.27	4.31	0.61	96.44
PI-MENS-R100	P	842.39	841.79	841.50	0.29	4.44	0.64	102.94
PI-MENS-R101	V	839.53	838.93	838.25	0.68	5.95	0.61	103.16
PI-MENS-R102	V	840.69	840.09	837.74	2.35	17.77	0.61	113.24
PI-MENS-R103	V	840.42	839.82	837.25	2.57	19.22	0.61	113.24
PI-MENS-R104	V	836.27	835.67	832.88	0.59	4.39	0.61	96.22
PI-MENS-R105	V	831.86	831.26	831.19	0.07	3.02	0.61	89.72
PI-MENS-R106	V	836.52	835.92	834.92	1.60	13.65	0.64	153.34
PI-MENS-R107	V	833.66	833.06	830.44	2.52	19.37	0.61	113.24
PI-MENS-R108	P	835.94	835.34	833.98	1.40	11.65	0.64	153.34
PI-MENS-R109	P	834.72	834.12	832.72	1.40	11.65	0.64	153.34
PI-MENS-R120	P	835.11	834.51	833.11	1.40	11.65	0.64	153.34
PI-MENS-R121	P	834.91	834.31	832.91	1.40	11.65	0.64	153.34
PI-MENS-R122	P	832.84	832.24	829.20	4.14	29.38	0.64	153.18
PI-MENS-R123	P	832.84	832.24	829.20	4.14	29.38	0.64	153.18
PI-MENS-R124	P	832.42	831.82	830.42	1.40	11.65	0.64	153.18
PI-MENS-R14	P	831.68	831.08	826.78	3.70	26.50	0.64	159.80
PI-MENS-R15	V	829.62	829.02	826.46	2.46	19.52	0.64	156.36
PI-MENS-R16	V	826.80	826.20	826.24	0.50	2.59	0.61	89.72
PI-MENS-R17	V	826.80	826.20	825.93	0.26	4.19	0.64	99.80
PI-MENS-R18	P	828.33	827.73	825.52	2.21	16.92	0.64	116.38
PI-MENS-R19	V	830.05	829.45	828.14	1.60	11.65	0.64	153.34
PI-MENS-R20	V	828.25	827.65	826.14	1.53	13.23	0.61	102.94
PI-MENS-R21	V	819.84	819.24	819.51	0.30	2.59	0.61	89.72
PI-MENS-R22	V	822.55	821.95	819.25	3.30	21.80	0.61	133.32
PI-MENS-R23	V	822.44	821.84	818.86	2.98	21.87	0.61	119.96
PI-MENS-R24	V	817.62	817.02	816.82	0.20	4.30	0.61	96.44
PI-MENS-R25	V	815.79	815.19	814.30	0.28	4.39	0.61	93.08
PI-MENS-R26	V	815.62	815.02	814.11	0.91	6.47	0.61	99.80
PI-MENS-R27	V	814.11	813.51	813.49	2.20	19.22	0.61	113.24
PI-MENS-R28	V	815.21	814.61	812.84	1.77	14.07	0.61	106.52
PI-MENS-R29	V	814.63	814.03	811.23	0.30	4.34	0.61	96.44
PI-MENS-R30	V	808.74	808.14	807.87	0.27	4.33	0.61	96.44
PI-MENS-R31	V	806.78	806.18	803.30	0.25	4.23	0.61	96.44
PI-MENS-R32	V	805.53	804.93	802.52	0.25	4.27	0.61	96.44
PI-MENS-R33	V	800.11	799.51	799.21	0.30	4.31	0.61	96.44
PI-MENS-R34	V	798.69	798.09	797.78	0.31	4.31	0.61	96.44
PI-MENS-R35	V	796.25	795.65	795.35	0.30	4.34	0.61	96.44
PI-MENS-R36	V	793.81	793.21	792.91	0.44	4.31	0.61	96.44
PI-MENS-R37	V	794.30	793.70	792.42	1.30	14.89	0.61	109.88
PI-MENS-R38	V	793.63	793.03	791.69	1.24	14.03	0.61	109.88