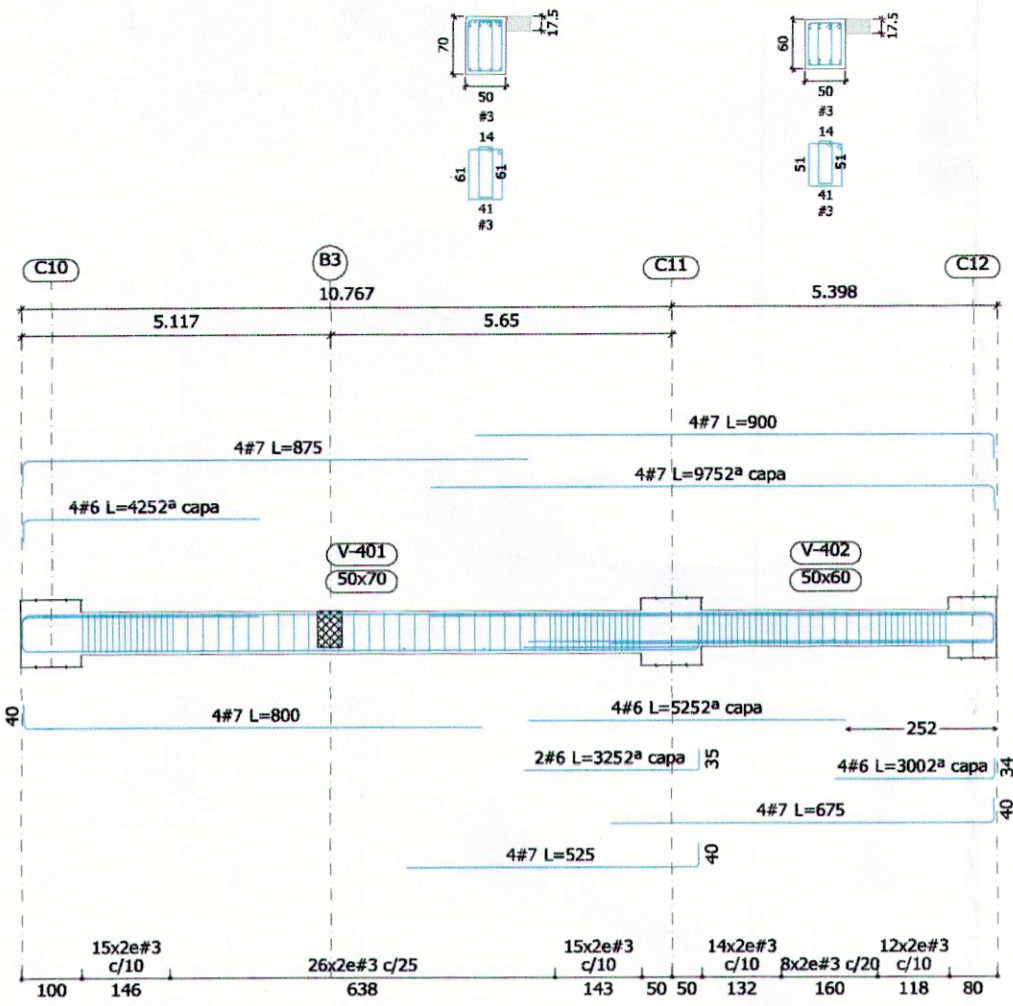
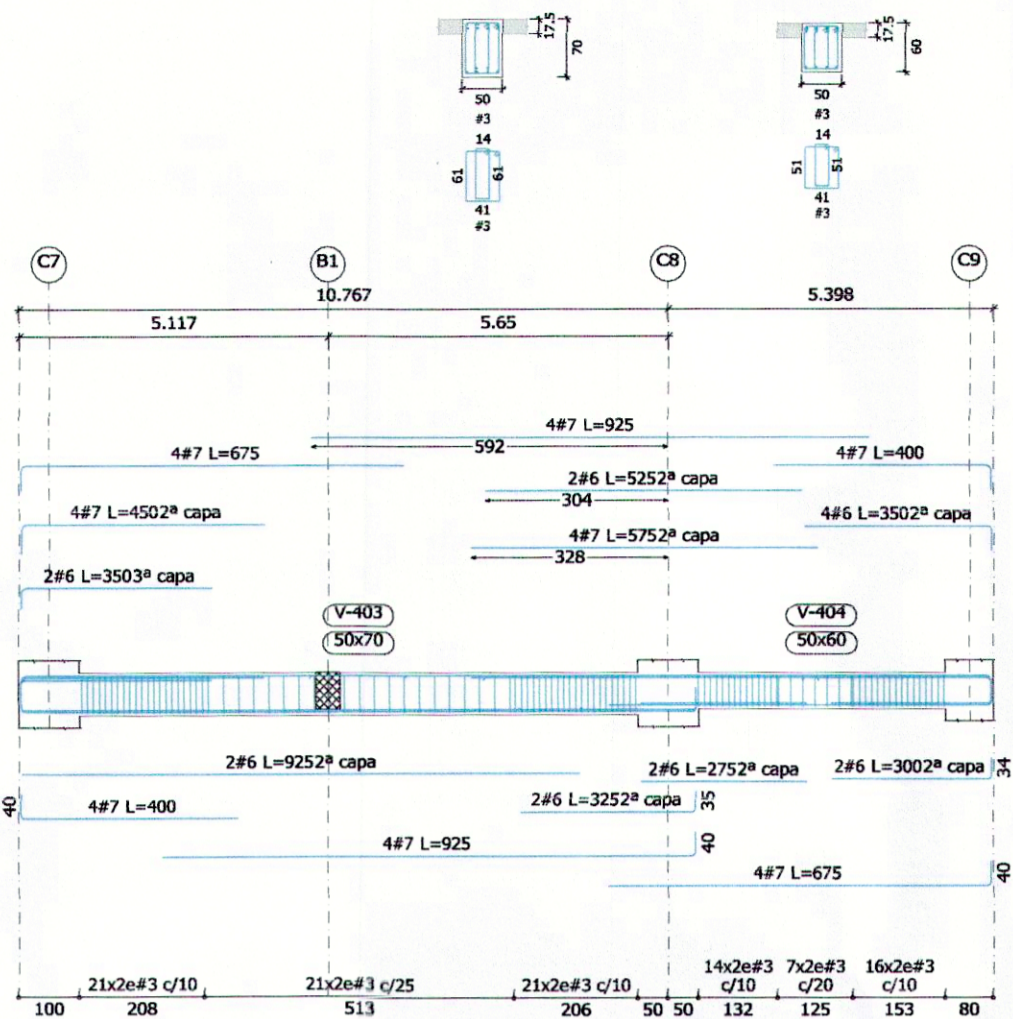


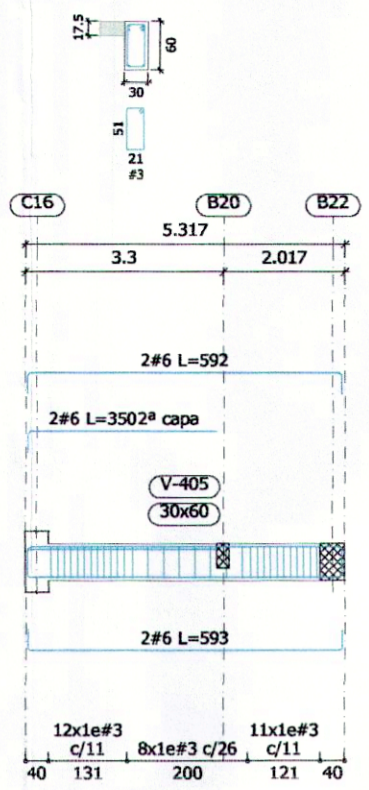
Pórtico 1



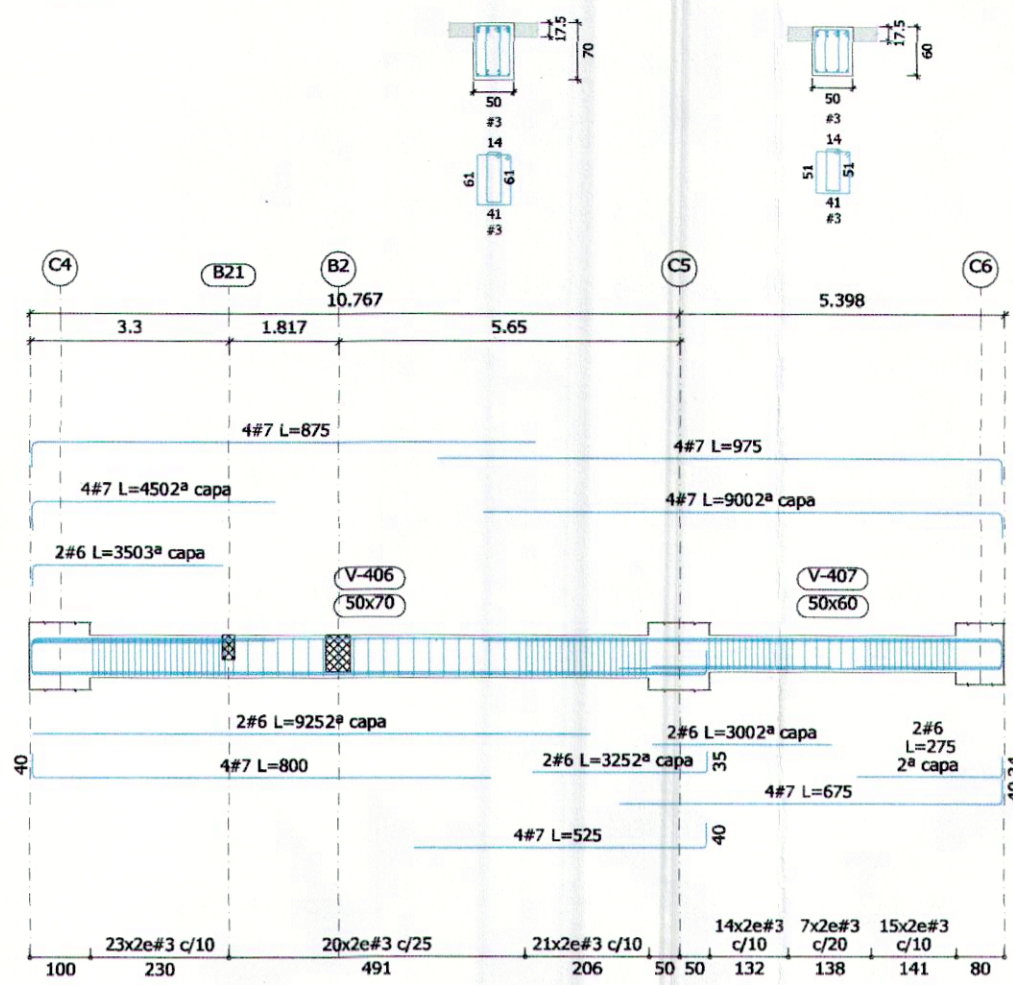
Pórtico 2



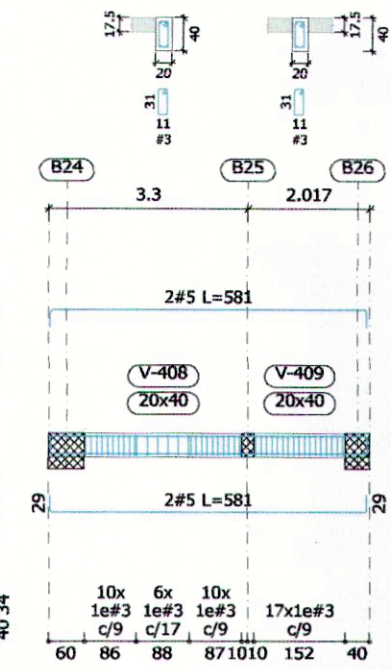
Pórtico 3



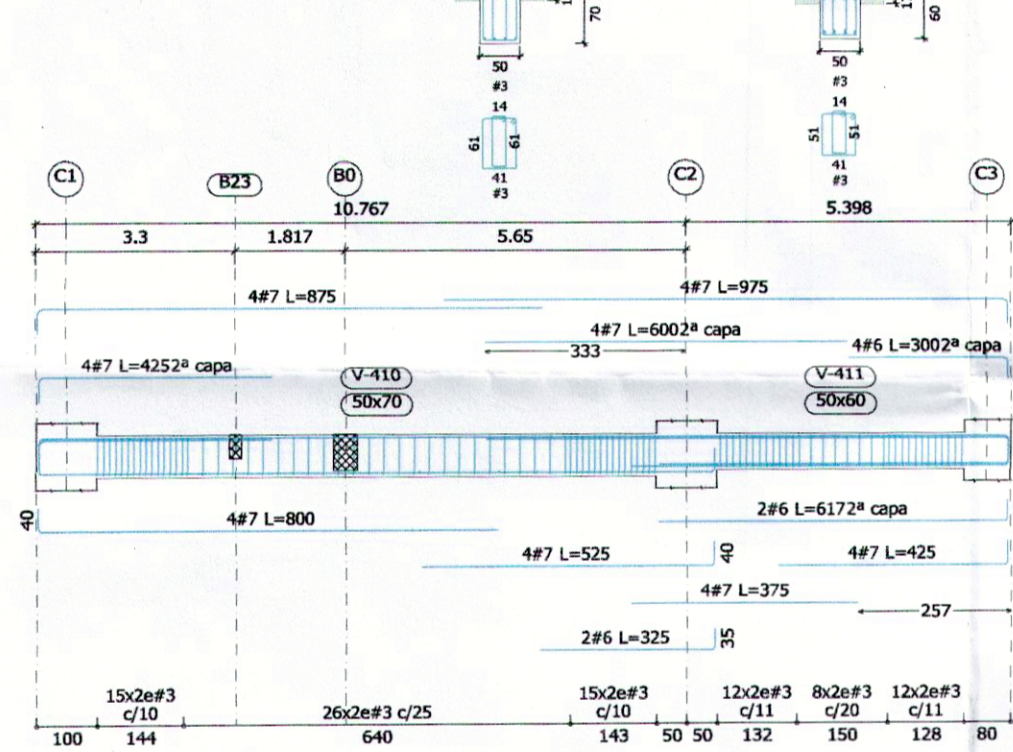
Pórtico 4



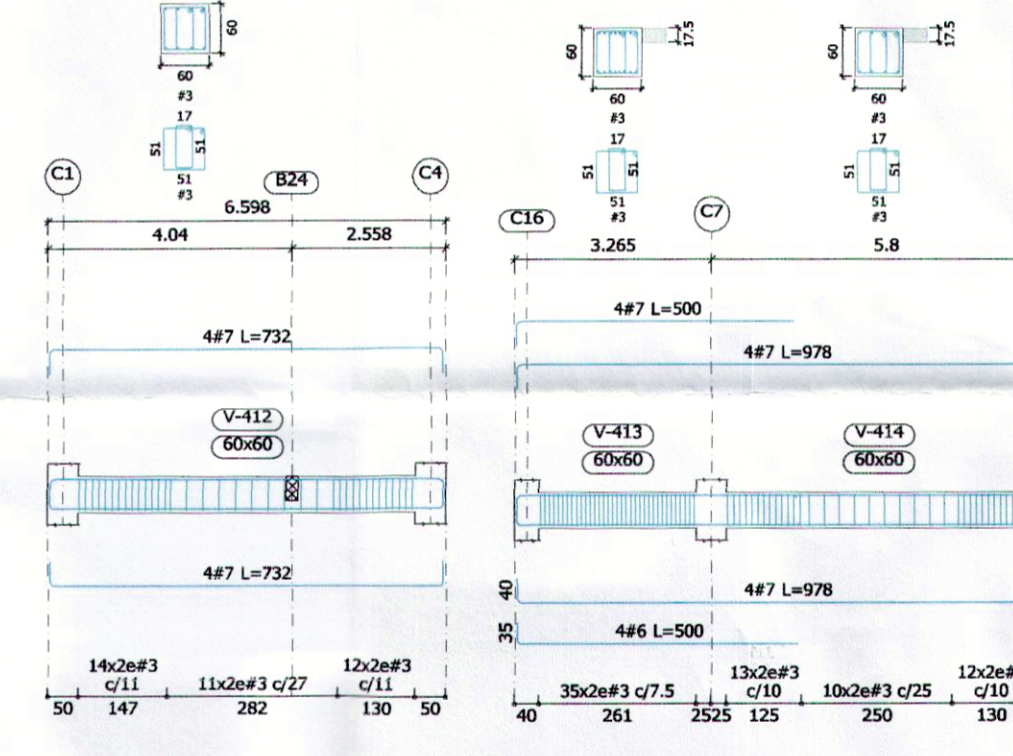
Pórtico 5



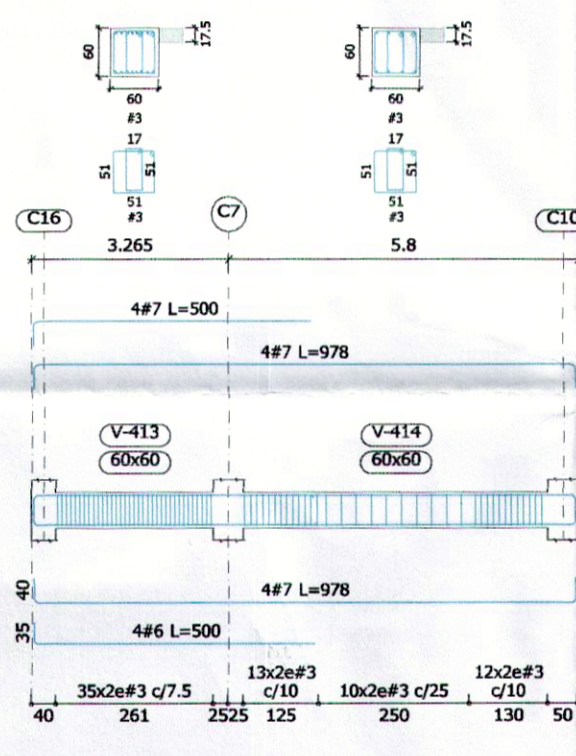
Pórtico 6



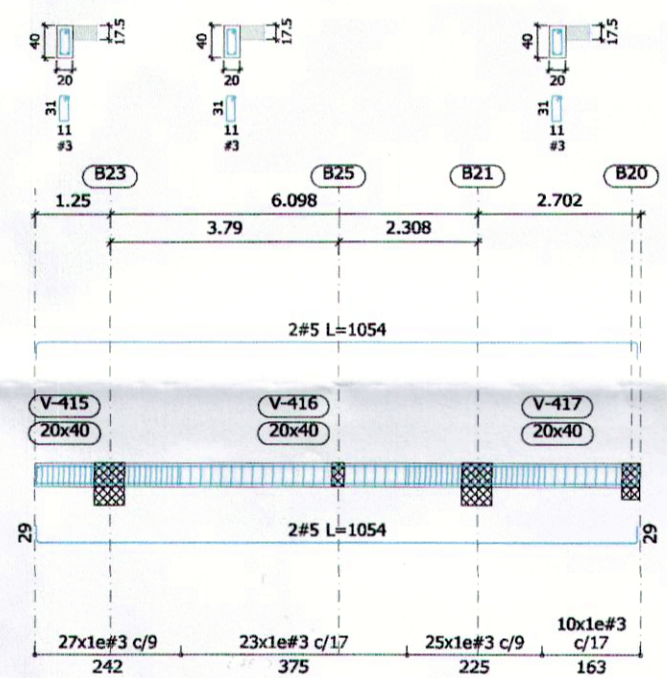
Pórtico 7



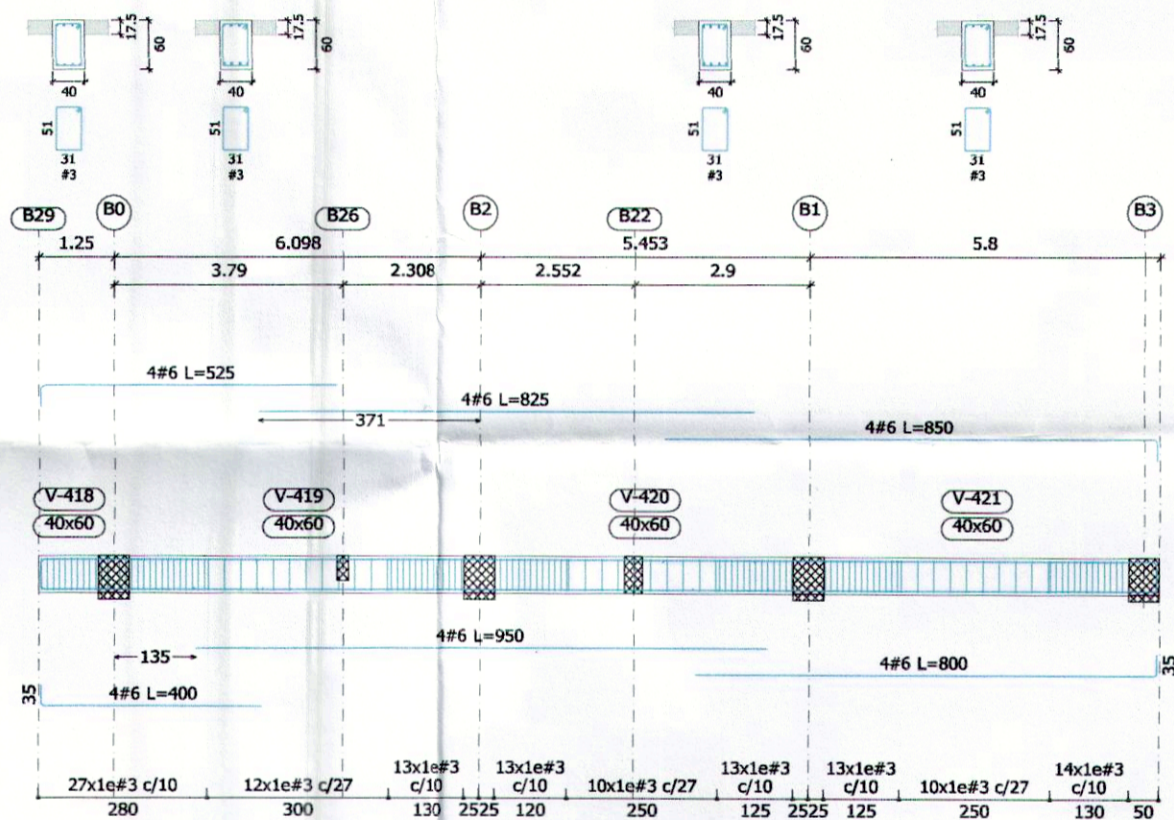
Pórtico 8



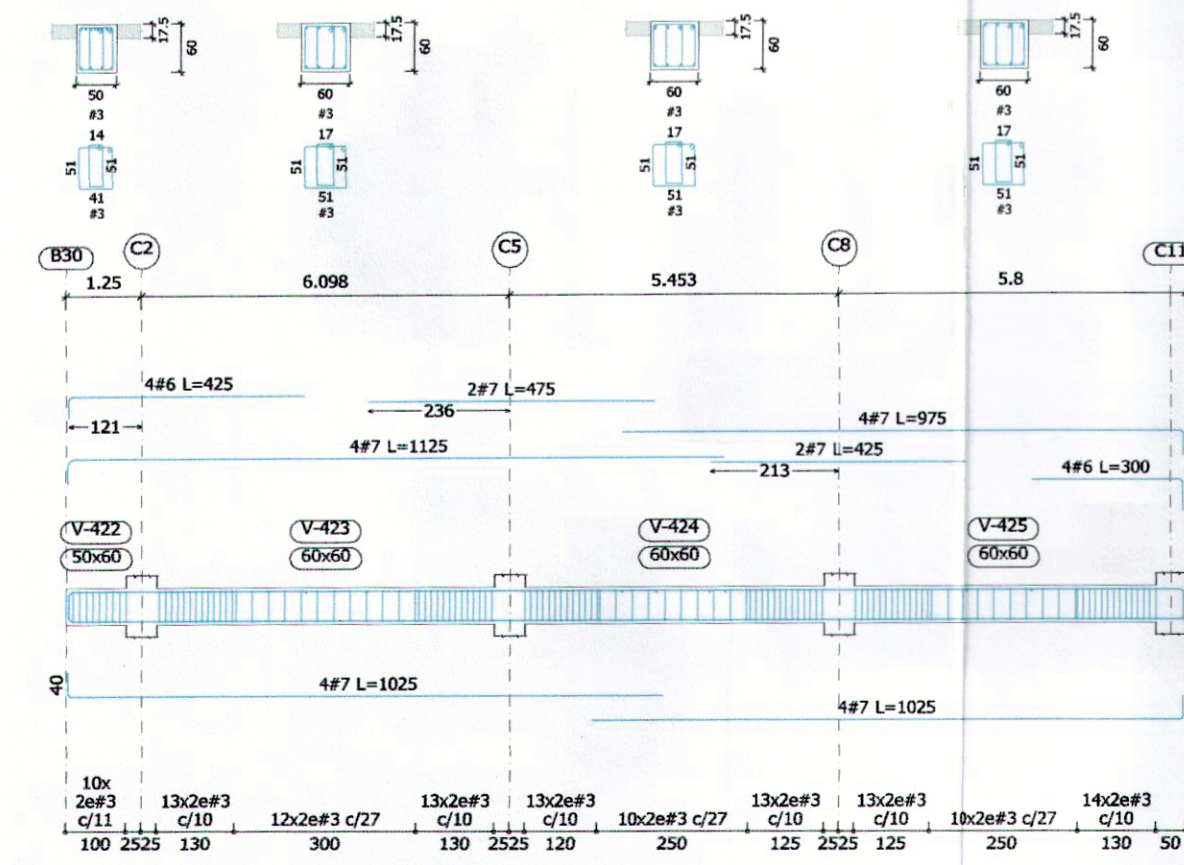
Pórtico 9



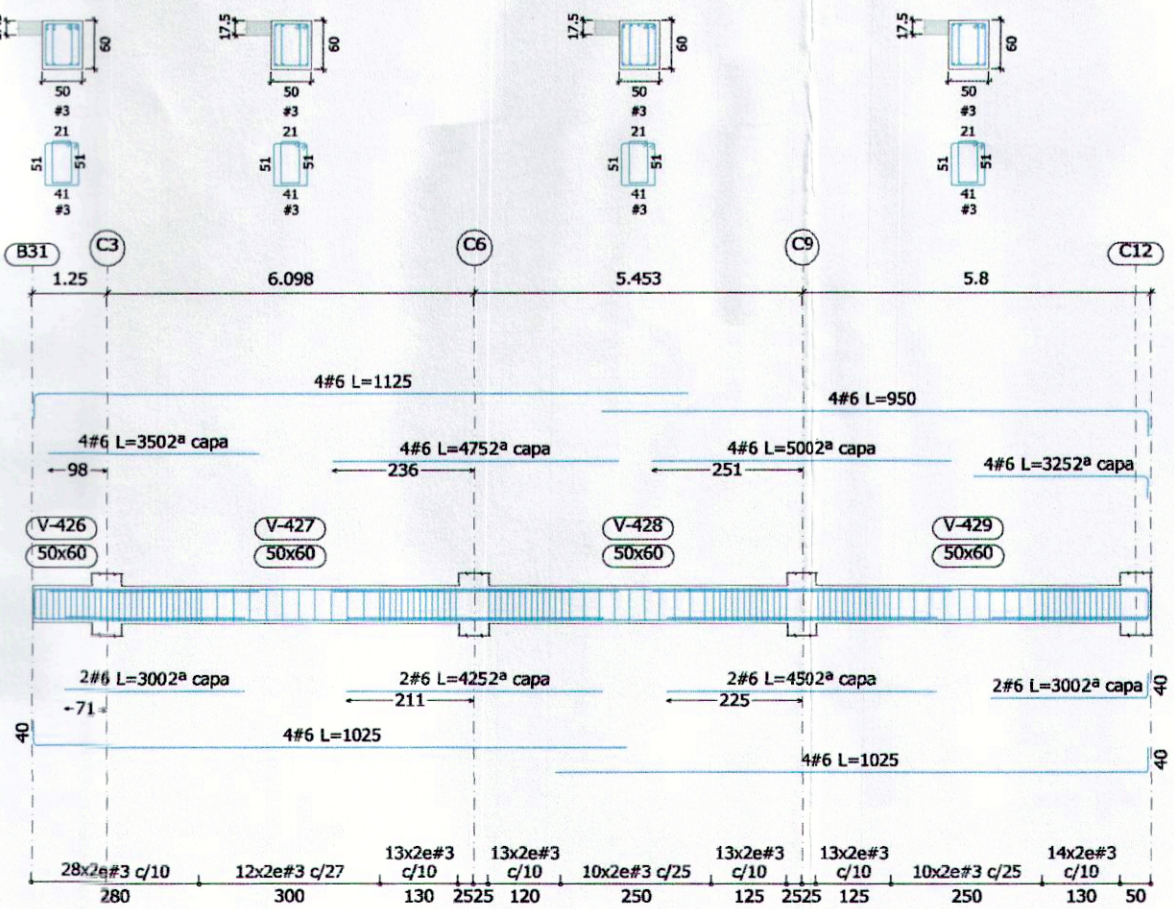
Pórtico 10



Pórtico 11



Pórtico 12



ESQ. PLANO 1 : 1 2 5

REVISIÓN	FECHA	MODIFICACIONES
1	15/12/14	PLANO INICIAL PLANOS PARA CIMENTACIÓN
2	16/02/15	ADJUSTES POR NUEVA ARQUITECTURA
3	24/04/15	ADJUSTES POR NUEVA ARQUITECTURA

PROYECTO: EMPAS EMPRESA PUBLICA DE ALCANTARILLADO DE SANTANDER S.A. E.S.P. DESPIECE DE VIGAS PISO 3 A 5

INGENIERO RESPONSABLE: RAMÓN ALVAREZ HERNÁNDEZ

EQUIPO DE DISEÑO: ING. EDUARDO MIELO MISC. INGENIERO EN MATERIA DE ESTRUCTURAS

PROPIETARIO: EMPRESA DE ALCANTARILLADO DE SANTANDER S.A. ESP

CONSULTOR: MELO Y ALVAREZ LTDA.

PLANO COPIA: VIGAS EMPAS 04

APROBADO: INCUBADO

Fecha: 13 MAR 2015