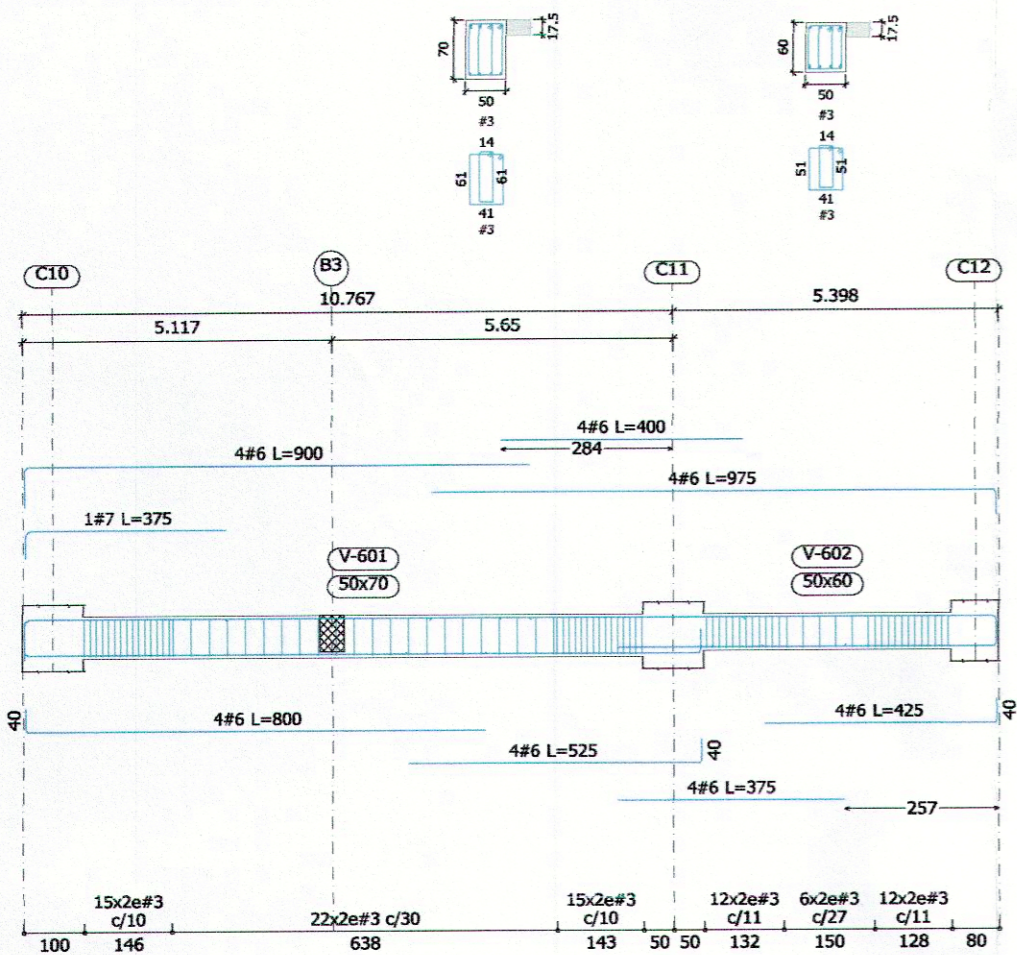
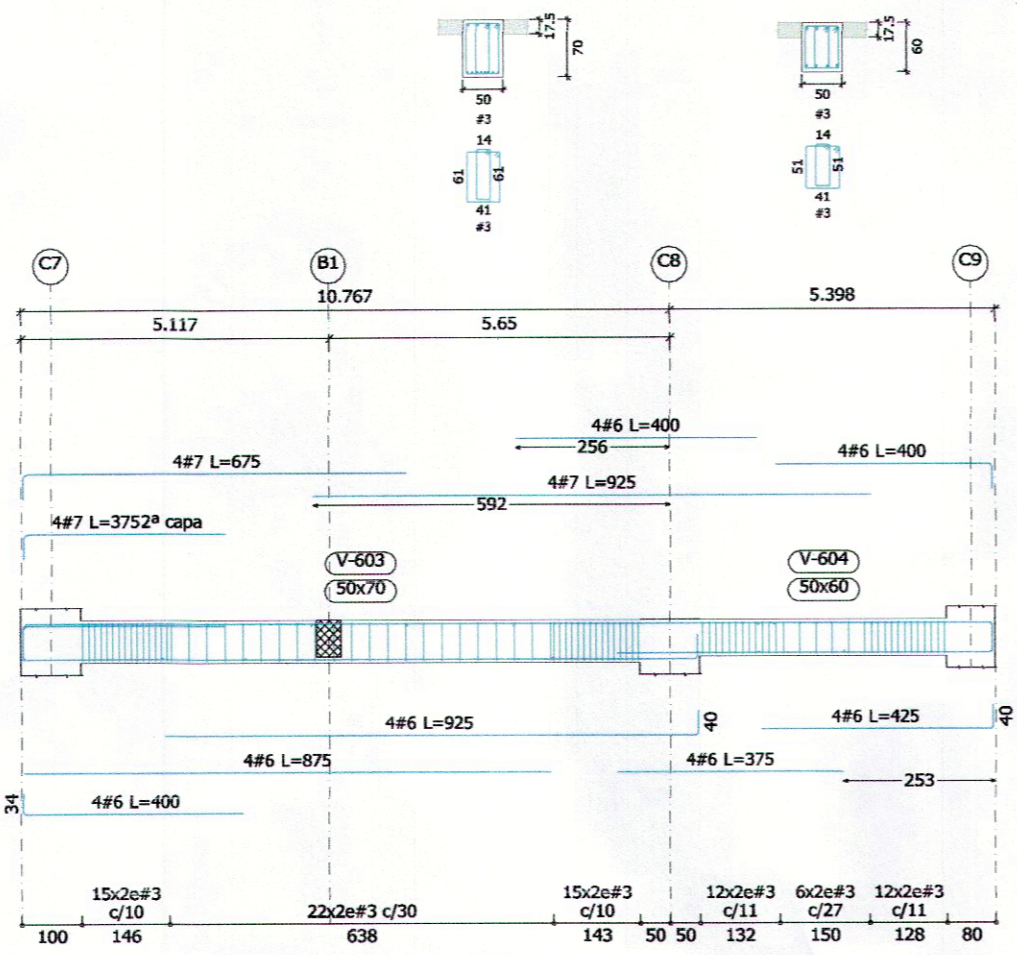


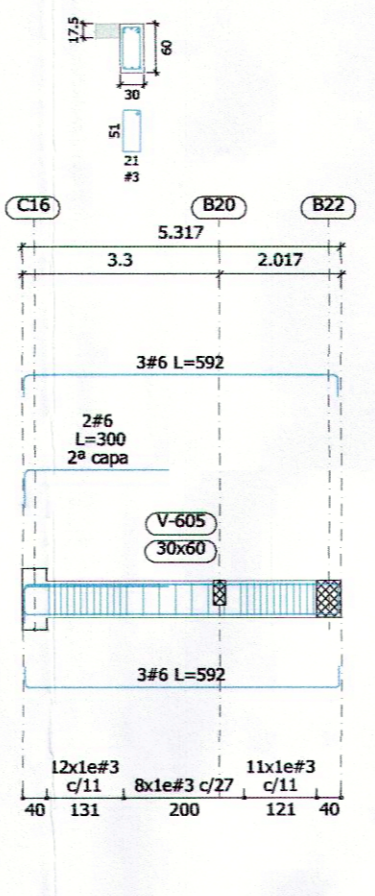
Pórtico 1



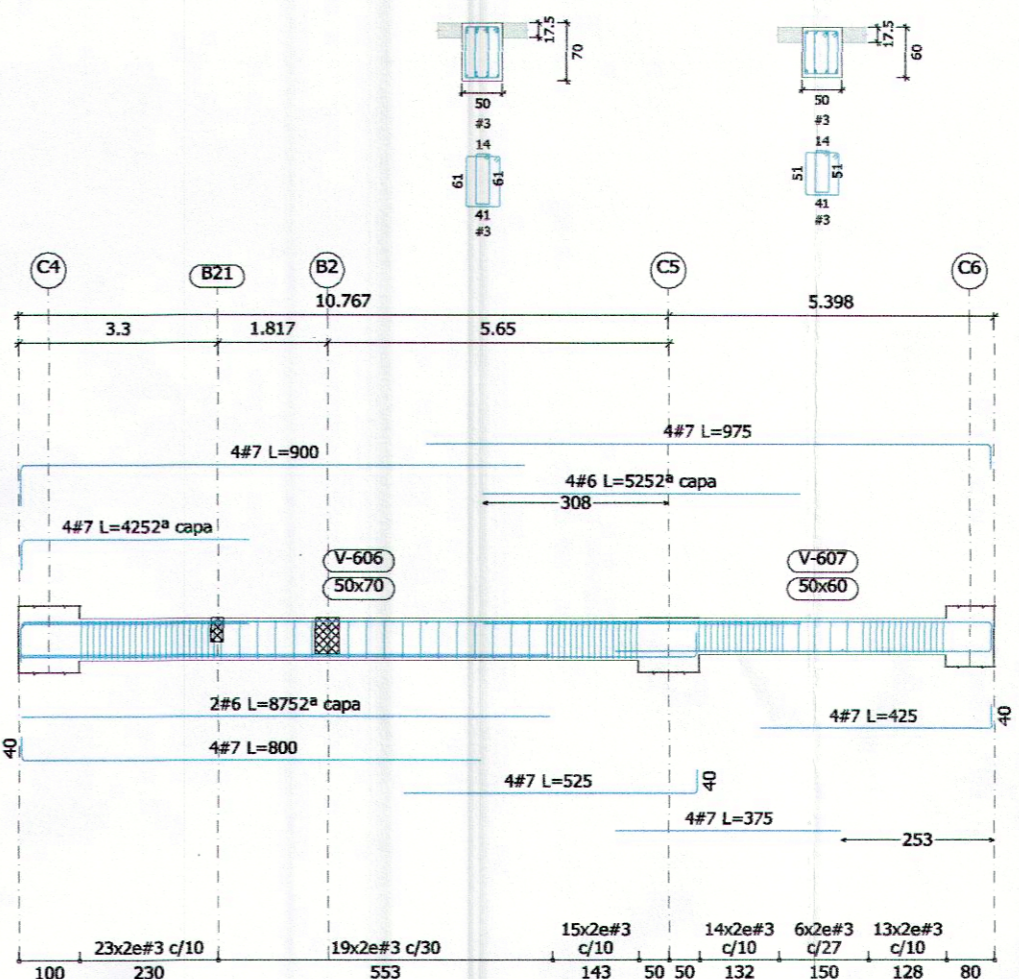
Pórtico 2



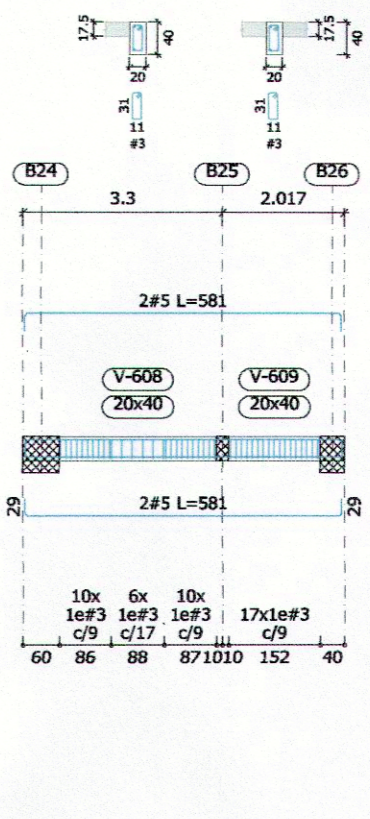
Pórtico 3



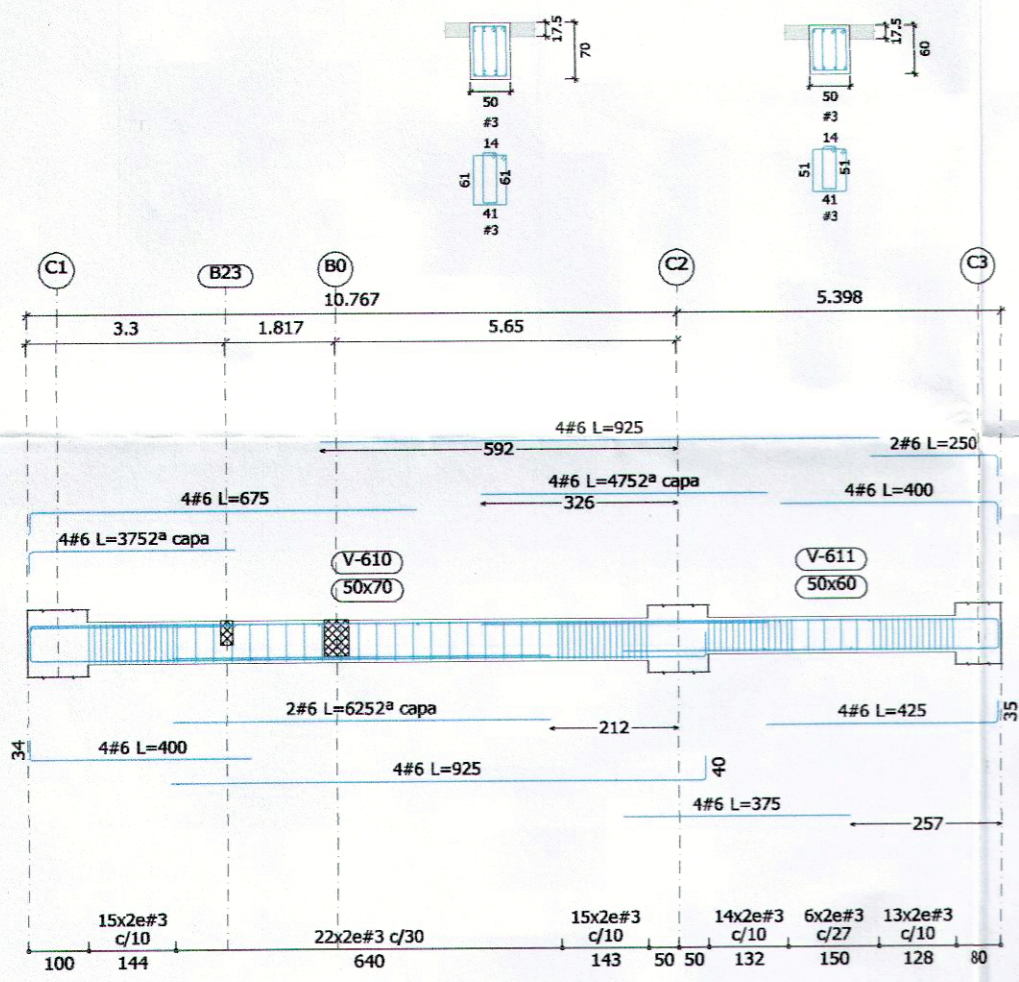
Pórtico 4



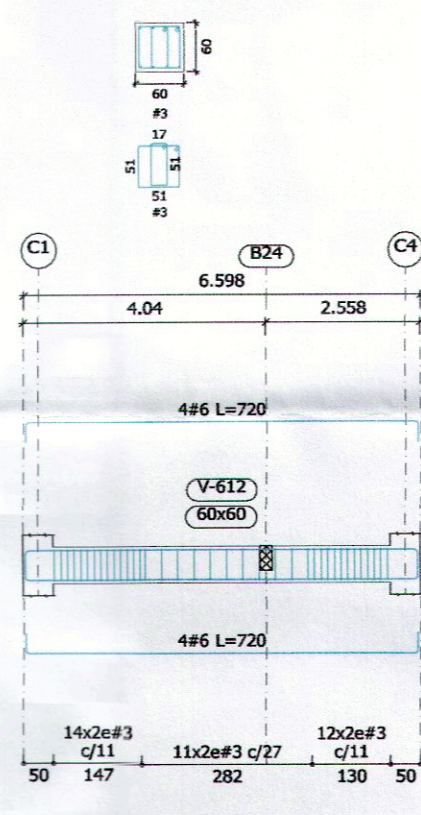
Pórtico 5



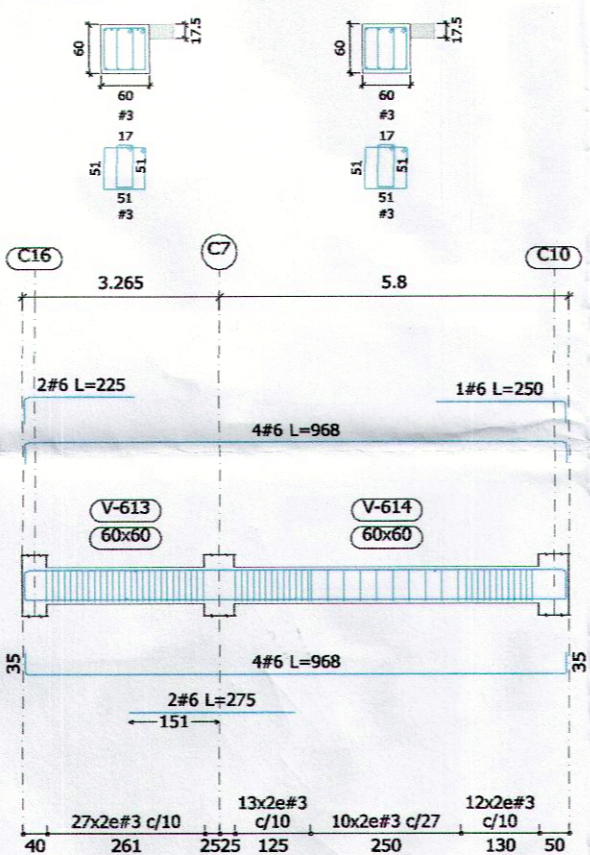
Pórtico 6



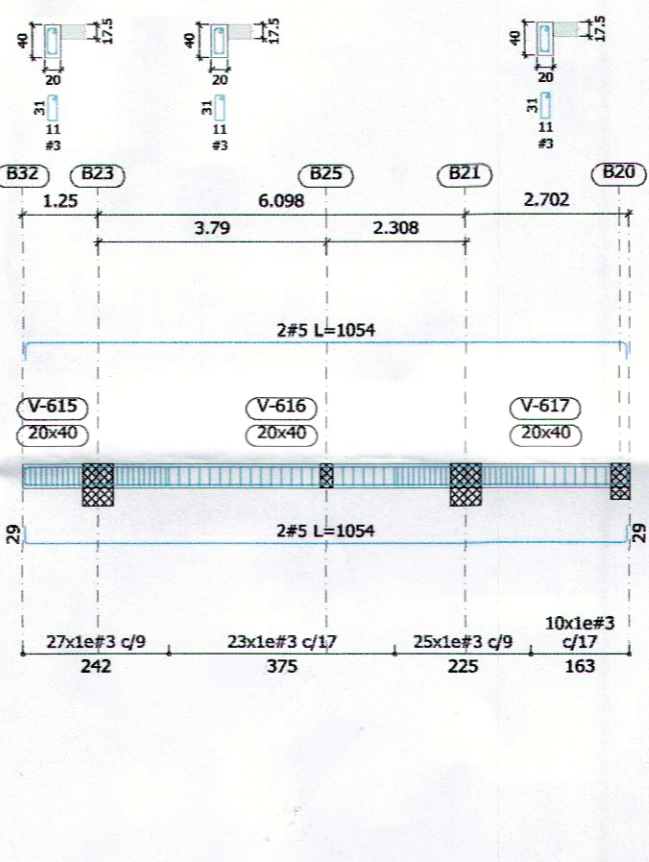
Pórtico 7



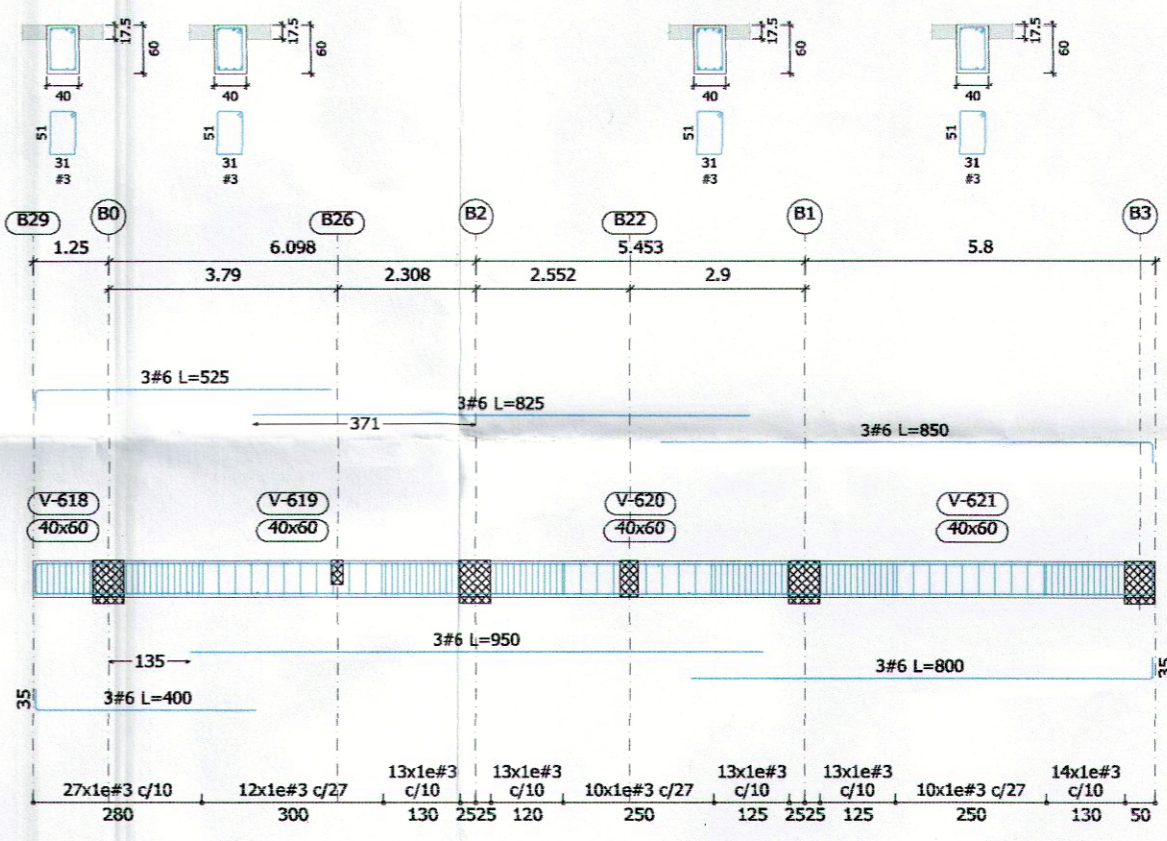
Pórtico 8



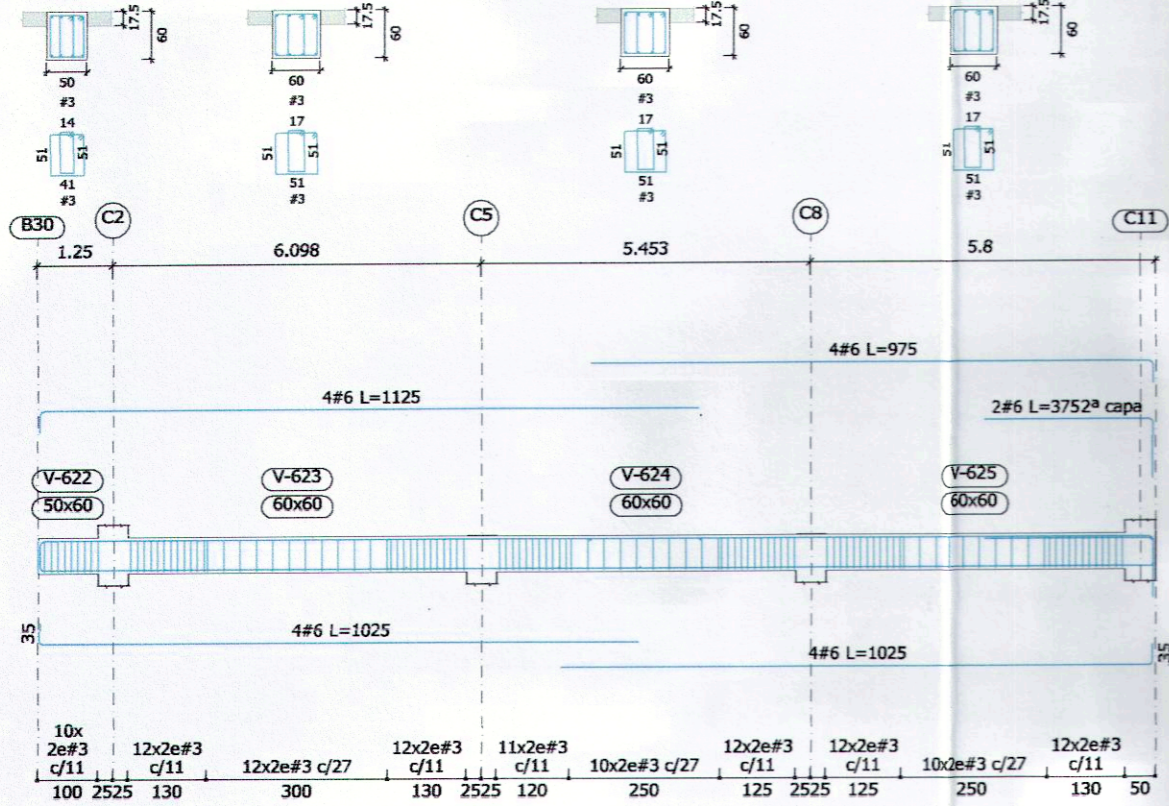
Pórtico 9



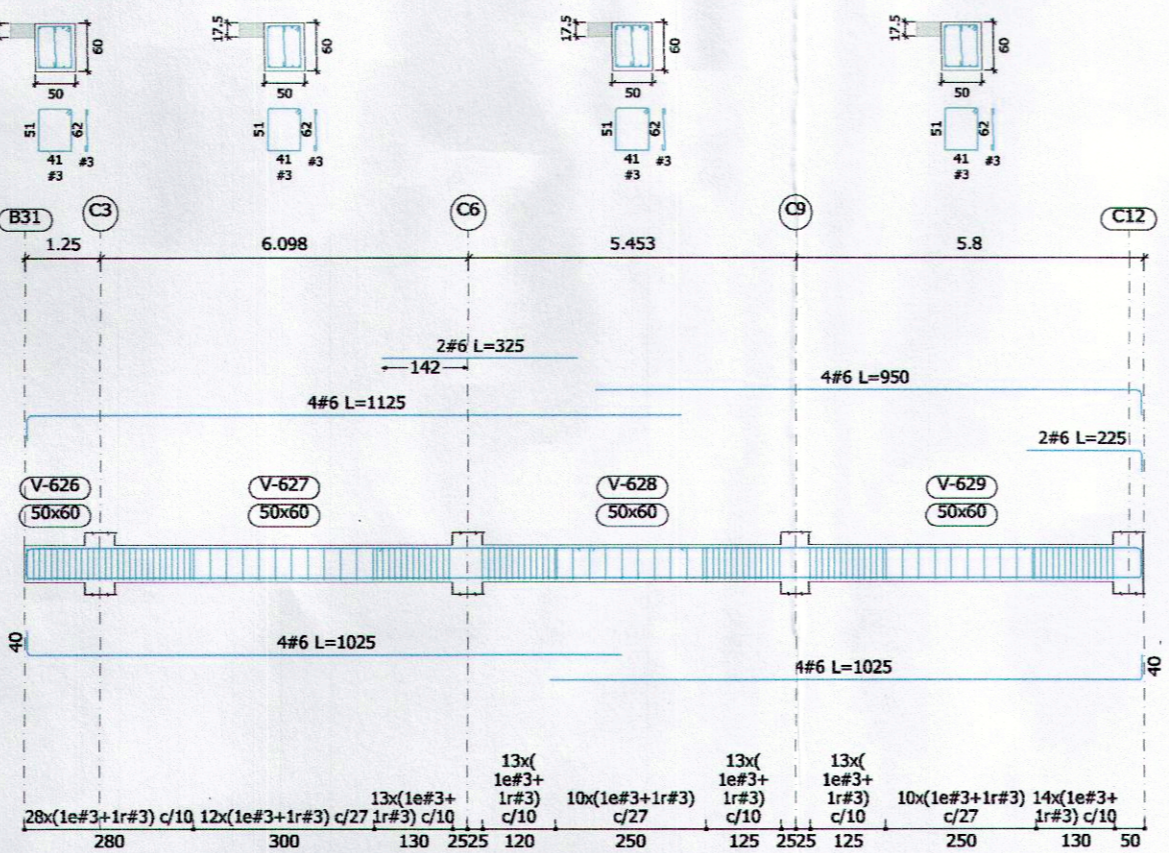
Pórtico 10



Pórtico 11



Pórtico 12



ESCALA: 1:125	
REVISIÓN	FECHA
0 15 12 14	0 15 12 14
1 18 02 15	1 18 02 15
2 24 04 15	2 24 04 15
PROYECTO: EMPAS EMPRESA PUBLICA DE ALCANTARILLADO DE SANTANDER S.A. E.S.P.	
CONTENIDO: DESPIECE DE VIGAS PISO 9	
INGENIERO RESPONSABLE: RAMÓN ALVAREZ HERNÁNDEZ	ASESOR DE CALIDAD: EDUARDO MELO M.C. INGENIERO DE CALIDAD
EQUIPO DE DISEÑO: HENRY ANIBALDO F. GONZALEZ	DIBUJANTE: DLTE. JAIME SILVA
PROPIETARIO: EMPRESA DE ALCANTARILLADO DE SANTANDER S.A. ESP	CONSULTOR: MELO Y ALVAREZ LTDA.
PLANO CON Nº	VIG EMPAS 06