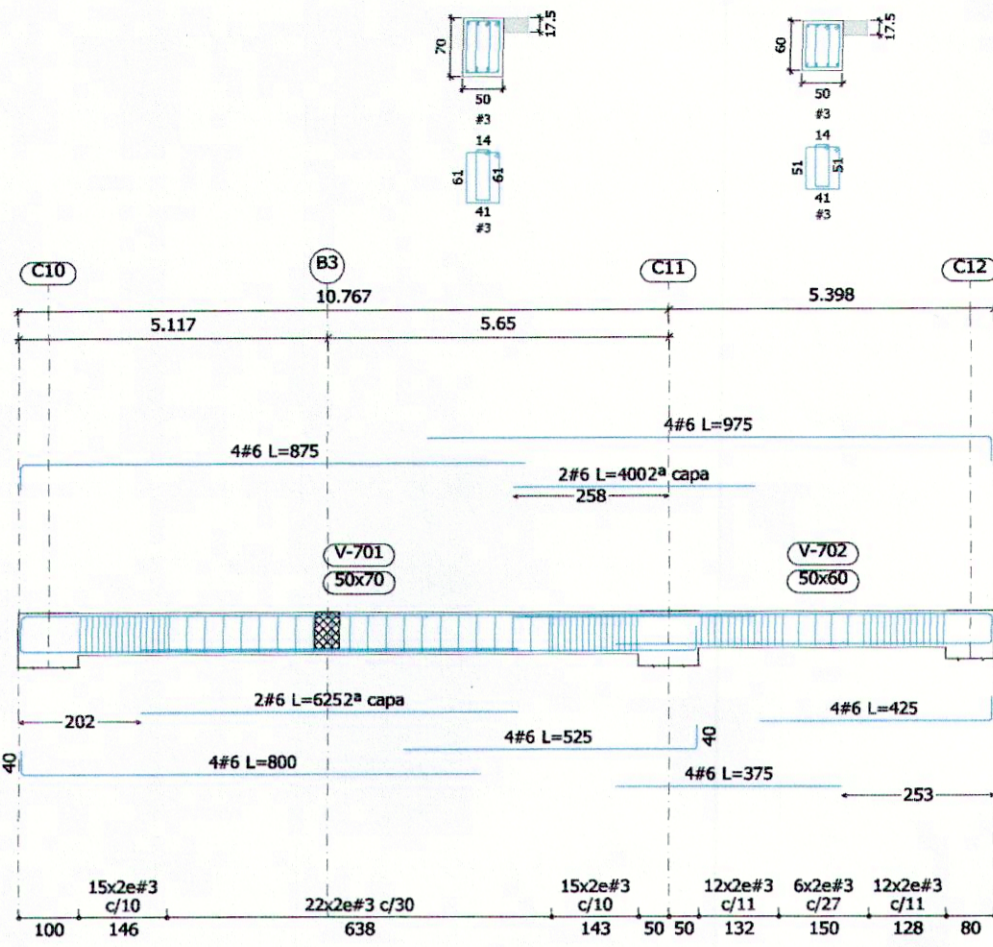
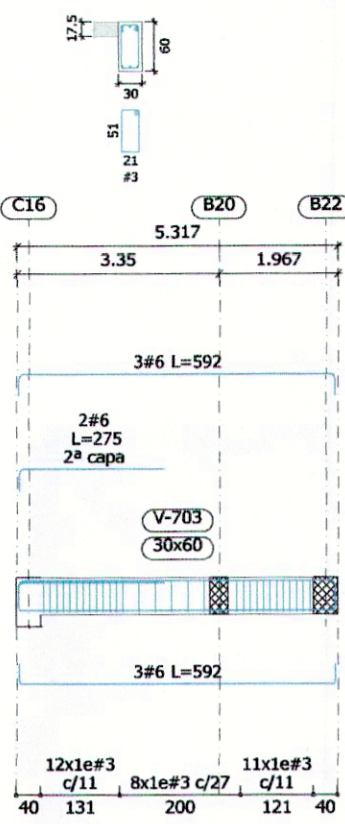


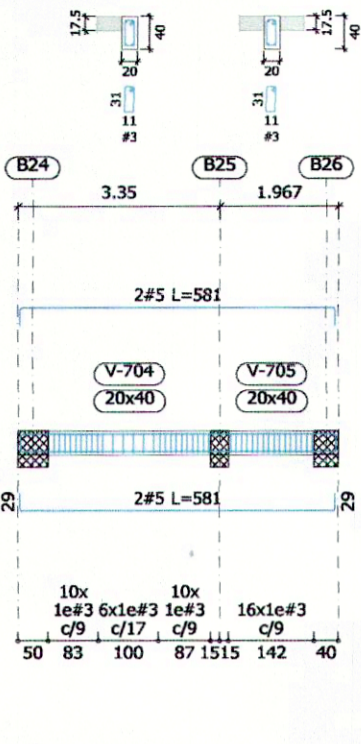
Pórtico 1



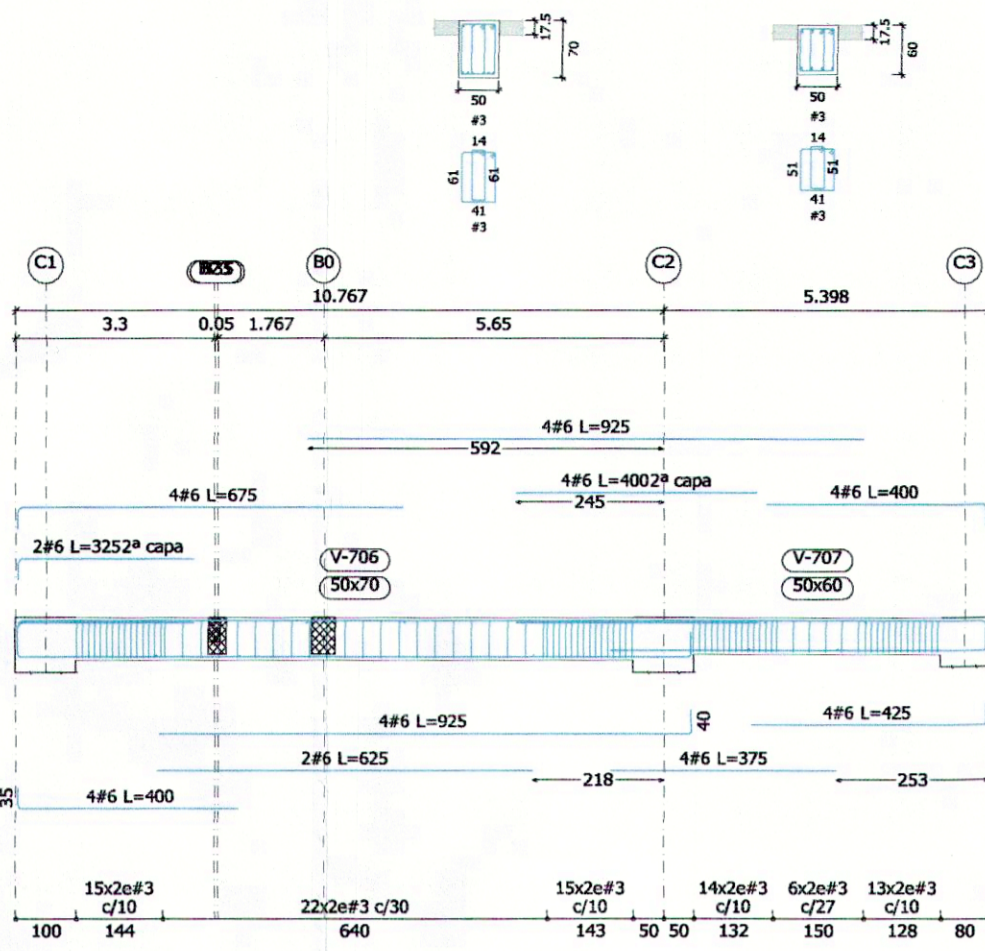
Pórtico 2



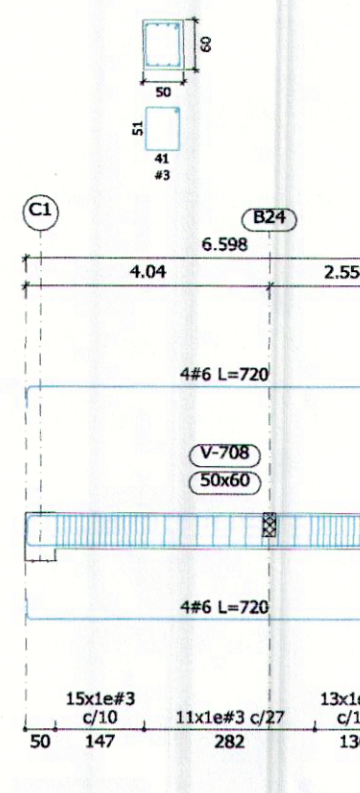
Pórtico 3



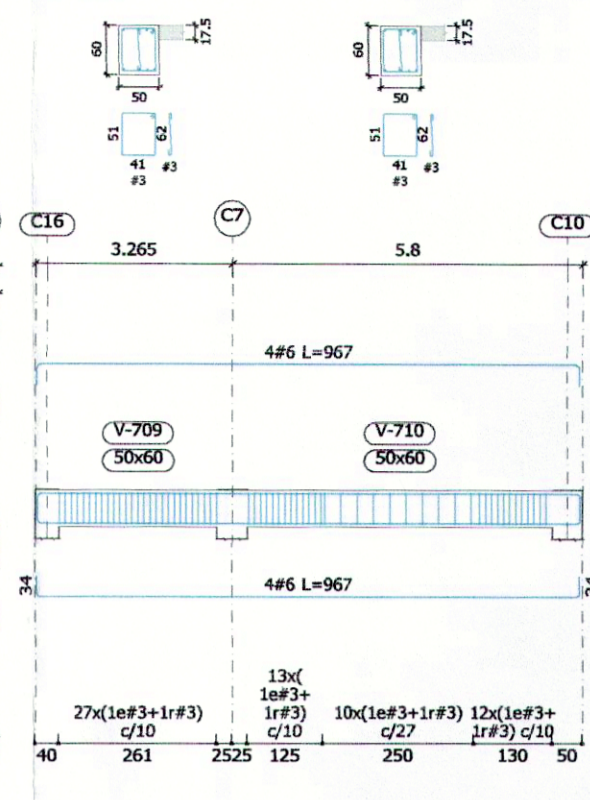
Pórtico 4



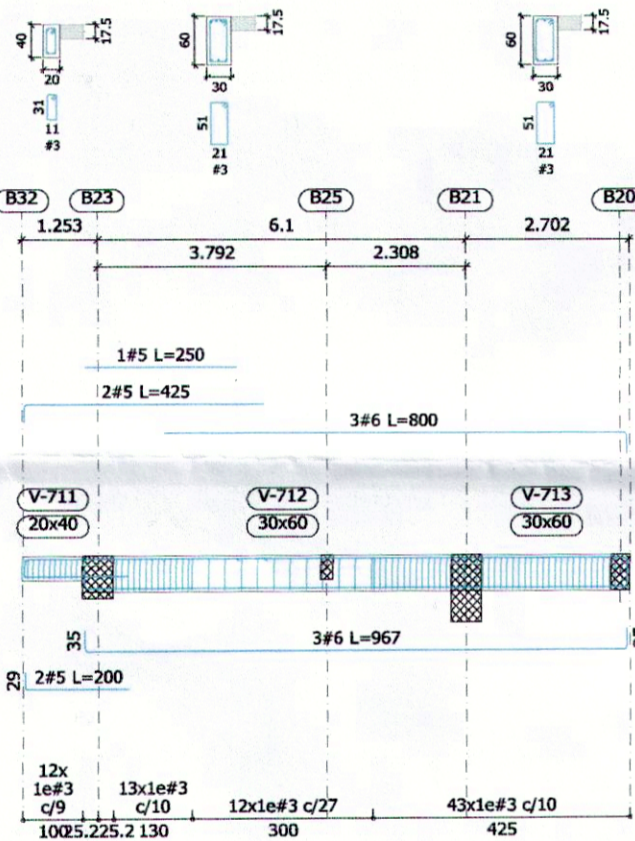
Pórtico 5



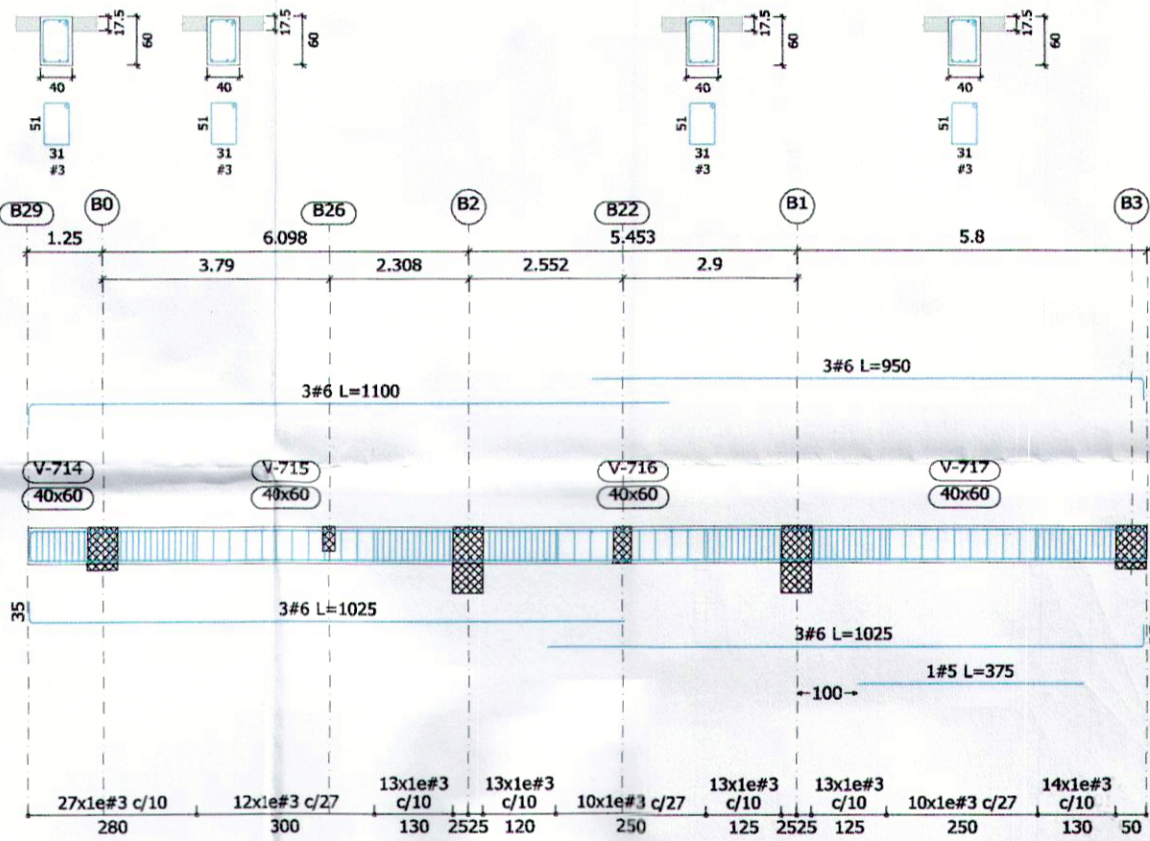
Pórtico 6



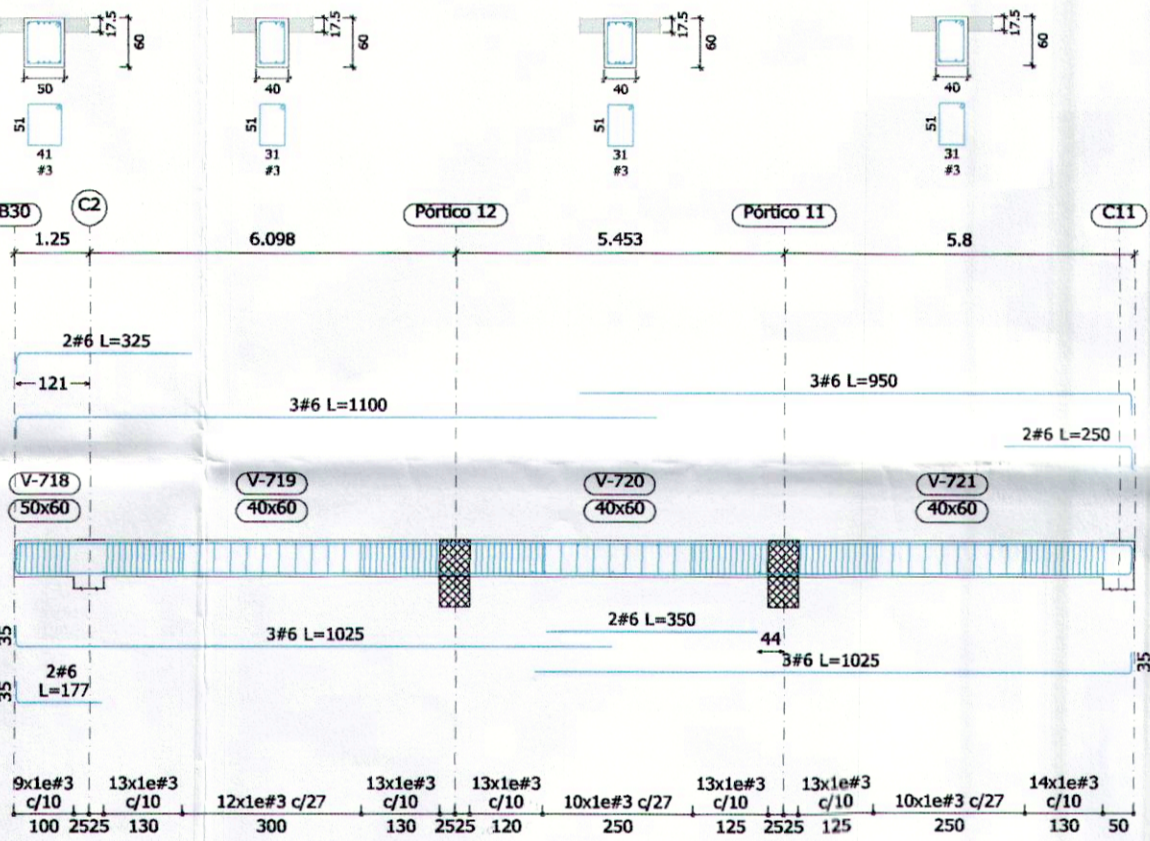
Pórtico 7



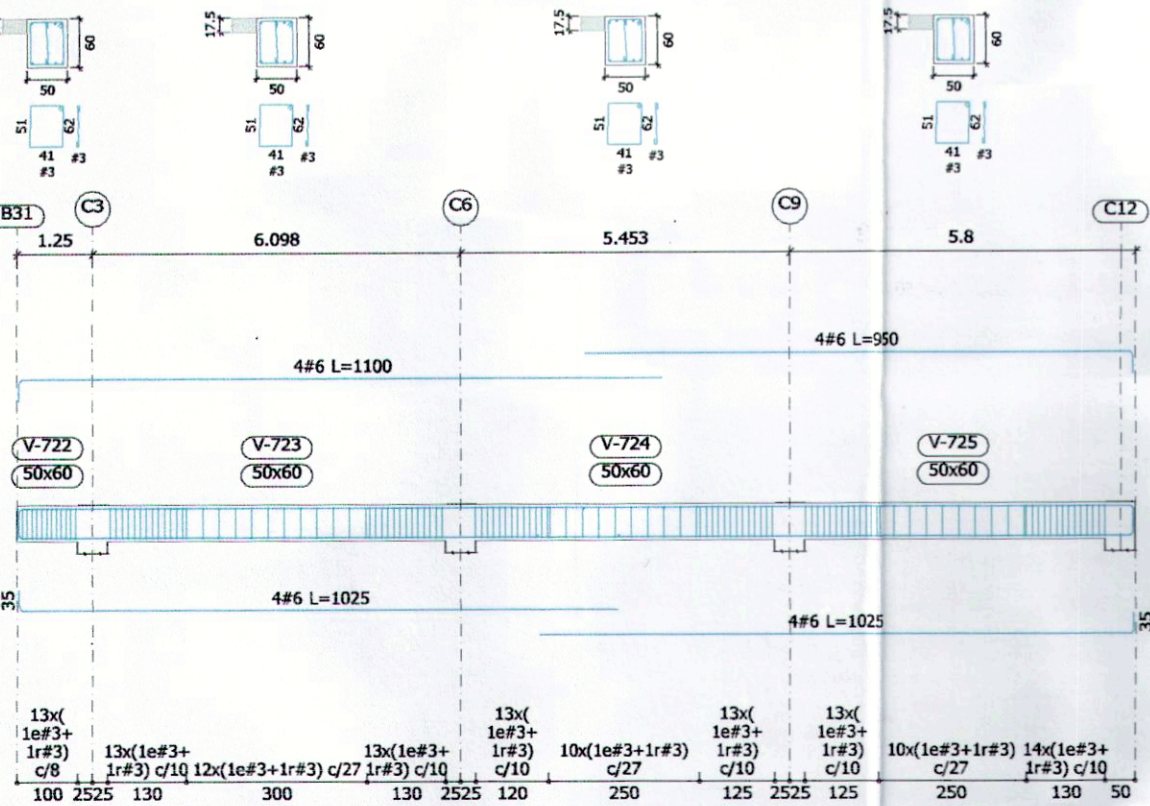
Pórtico 8



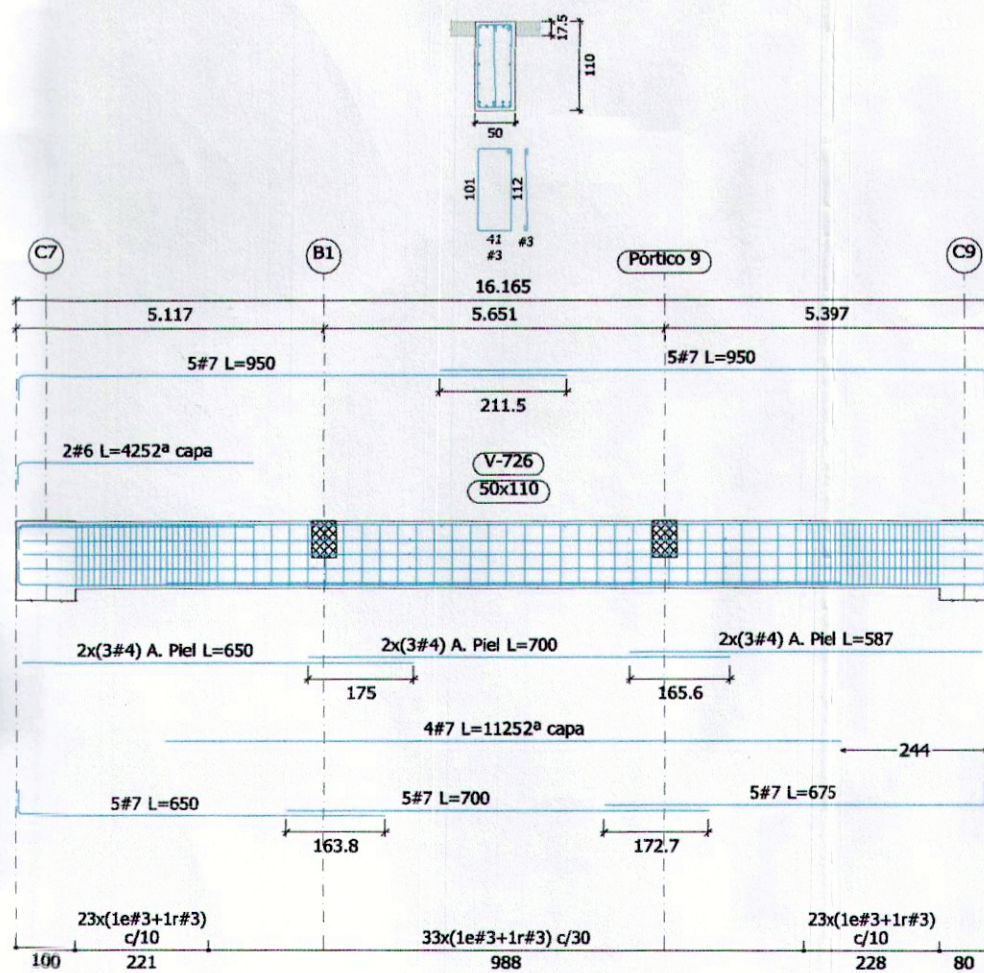
Pórtico 9



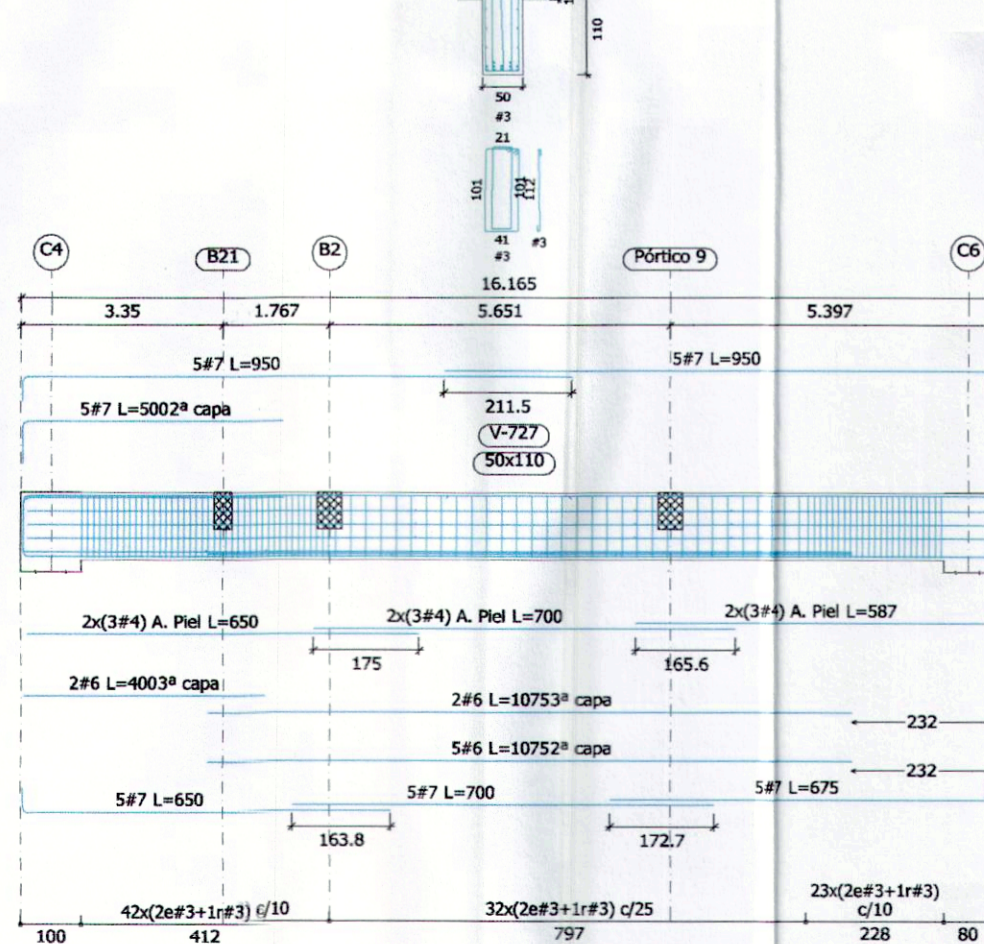
Pórtico 10



Pórtico 11



Pórtico 12



ESC. PLANO		1 : 105	
VER. APROBADO	FECHA	MODIFICACIONES	PROYECTO
0	15/12/14	PLANO INDICA PLANOS PARA CUADRIERA	EMPAS DE ALICANTARILLADO DE SANTANDER S.A. E.S.P.
1	18/02/15	AJUSTES POR NUEVA ARQUITECTURA	DESPIECE DE VIGAS CUBIERTA
2	24/04/15	AJUSTES POR NUEVA ARQUITECTURA	
PROPIETARIO		INGENIERO RESPONSABLE	
EMPAS DE ALICANTARILLADO DE SANTANDER S.A. E.S.P.		RAMÓN ALVAREZ HERNÁNDEZ	
CONSULTOR		ASEG. DE CALIDAD	
VIG EMPAS 07		ING. EDUARDO MORALES MORALES	
		DIBUJANTE	
		DLTE. JAINE SILVA	